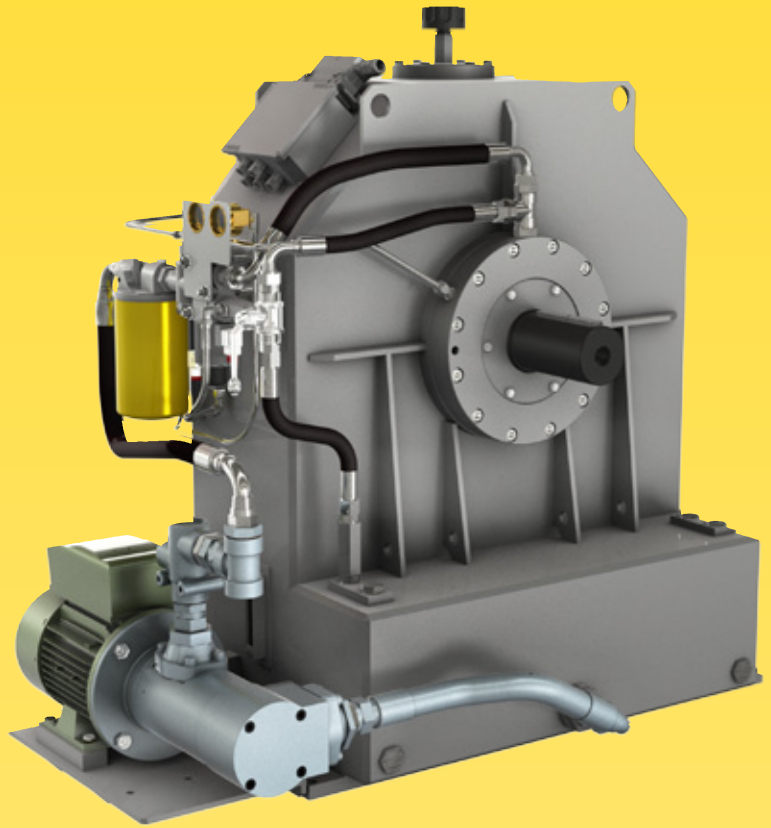


TRANSFLUID



TRANSFLUID

trasmissioni industriali



drive with us

KPT
VARIABLE FILL FLUID COUPLINGS

FLUID COUPLINGS KPT SERIES

DESCRIPTION

The **KPT** is a variable fill fluid coupling designed to be a start up drive or a variable speed drive.

The **KPT** has an externally driven oil feeding pump and a remote electrically operated ON-OFF valve. When the valve is turned ON, the fluid coupling circuit is fed, when it is turned OFF, rapid oil drain occurs through orifices located on the periphery of the coupling.

The forced bearing lubrication is continuously assured.

The **KPT** control is achieved by on/off solenoid valve modulation or oil flow control valve (4-20mA signal) to obtain more accurate start up control and/or speed variation.

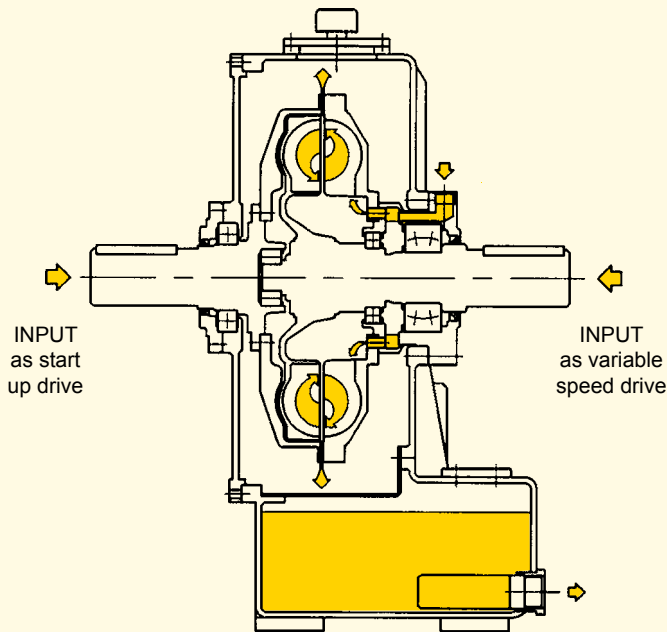
The KPT range is suitable for powers up to 1700 kW as start up drive and 600 kW as variable speed drive.

The input and output straight shafts can be connected to electric motor diesel/engine and driven machine by elastic and flexible couplings.

Standard accessories: oil motor pump, oil filter with pressure and temperature gauges, ON-OFF electric valve, oil temperature and pressure switches, oil level indicators, connecting wiring box with plug.

Options: oil flow control valve water or air heat exchanger, quick release valves, output pulley, flexible and elastic couplings, cardan shafts, electric control board.

WORKING SCHEME



| rpm | Size | | SELECTION TABLE (kW) | | | | |
|------|------|-----|----------------------|-----|-----|------|------|
| | 15 | 17 | 19 | 21 | 24 | 27 | 29 |
| 1000 | - | - | 70 | 100 | 150 | 220 | 350 |
| 1200 | - | - | 90 | 150 | 220 | 300 | 520 |
| 1500 | - | - | 160 | 230 | 315 | 570 | 1000 |
| 1800 | - | - | 275 | 400 | 545 | 1000 | 1700 |
| 3000 | 315 | 560 | | | | | |
| 3600 | 450 | 600 | | | | | |

FEATURES

The variable fill fluid coupling allows to disconnect the prime mover from the load, granting the following advantages:

- motor start up at no load
- smooth start up even possible under nominal motor current
- shock and overload protection
- torsional vibration dampening
- high radial load capacity (KPTe)
- no belt slip
- remote control
- load positioning
- cheap and easy maintenance due to external mounting of main accessories like oil filter, feeding pump, control valve
- longer life thanks to no friction linings to wear out
- accurate variable speed performances
- special hazardous area design available upon request

APPLICATIONS

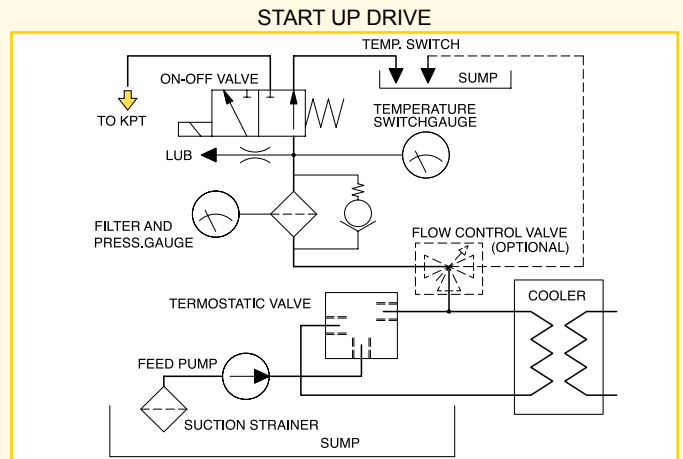
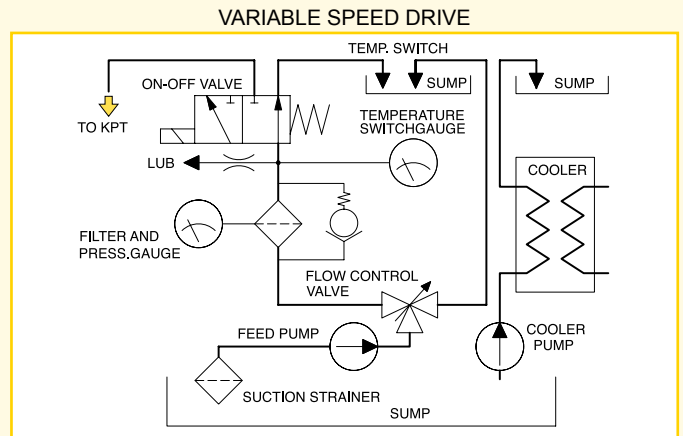
start up drive:

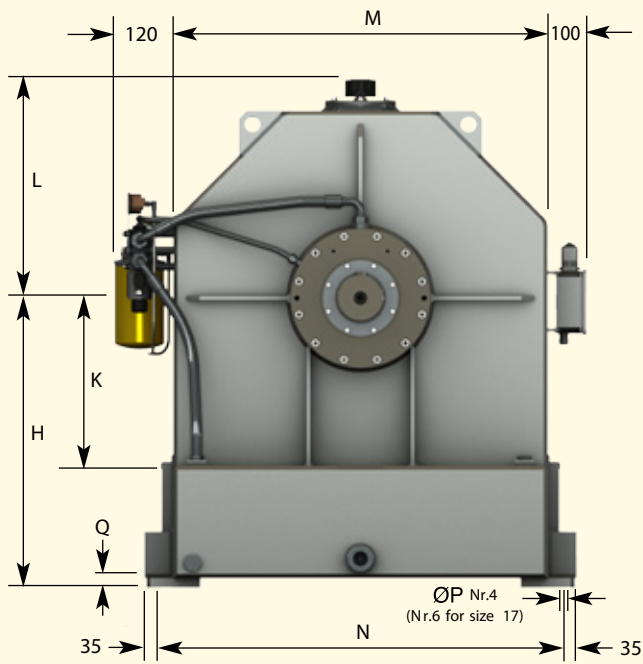
- mills, crushers, wood chippers, grinders
- belt conveyors
- reciprocating and centrifugal pumps, compressors
- marine propulsion
- generators
- centrifuges, fans and blowers
- mixers

variable speed drives:

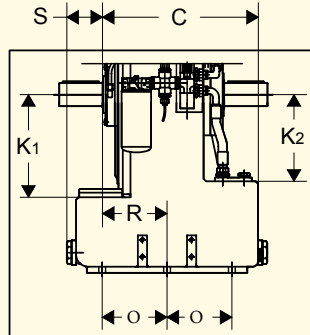
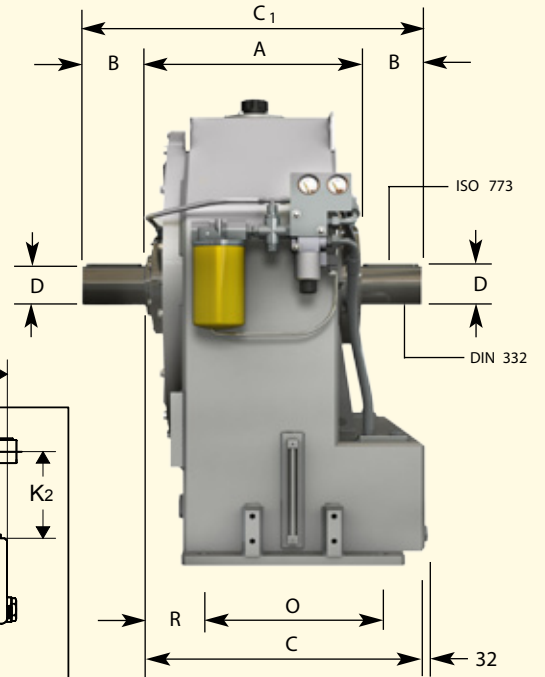
- centrifugal pumps and compressors
- fans and blowers
- mills, belt conveyors (inspection speed)

HYDRAULIC CIRCUIT





KPTB



Only for 17 KPTB

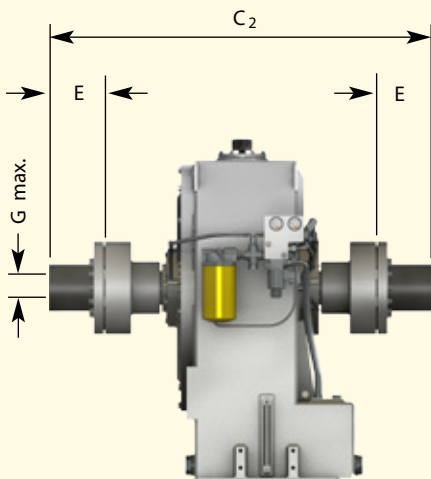
Size Dimensions

| | A | A ₁ | B | B ₁ | C | C ₁ | C ₂ | C ₃ | C ₄ | C ₅ | D | D ₁ | E | E ₁ | G |
|-------|-----|----------------|-----|----------------|-----|----------------|----------------|----------------|----------------|----------------|-----|----------------|-----|----------------|-----|
| 15 | 390 | 402 | 110 | 130 | 502 | 610 | 836 | 772 | 723 | 613 | 65 | 70 | 90 | 76 | 75 |
| 17 | 396 | 406 | 120 | 150 | 506 | 636 | 864 | 798 | 750 | 640 | 75 | 80 | 110 | 76 | 95 |
| 19 | 396 | 406 | 120 | 150 | 506 | 636 | 864 | 798 | 750 | 640 | 75 | 80 | 110 | 76 | 95 |
| 21/24 | 451 | 463/539 | 140 | 180 | 586 | 731 | 1079 | 921 | 905 | 735 | 85 | 100 | 122 | 90 | 110 |
| 27 | 560 | 664 | 180 | 220 | 689 | 920 | 1270 | 1142 | 1095 | 925 | 100 | 115 | 145 | 105 | 120 |
| 29 | 610 | - | 180 | - | 739 | 970 | 1400 | 1192 | 1185 | 975 | 120 | - | 165 | 105 | 135 |

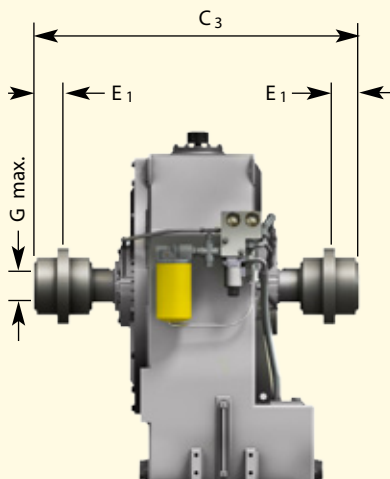
Size Dimensions

| | G ₁ | H | K | K ₁ | K ₂ | L | M | N | O | P | Q | R | S | Flexible coupling | Gear coupling | Weight (Kg) w/o oil | Oil (lt) |
|-------|----------------|-----|-----|----------------|----------------|-----|-----|------|-----|----|----|-----|-----|-------------------|---------------|---------------------|----------|
| 15 | 85 | 520 | 282 | - | - | 420 | 670 | 730 | 280 | 22 | 20 | 137 | - | B3M 48 | 2½" | 280 | 40 |
| 17 | 85 | 580 | - | 334 | 282 | 420 | 670 | 730 | 211 | 22 | 20 | 210 | 116 | B3M 55 | 2½" | 500 | 85 |
| 19 | 85 | 520 | 282 | - | - | 420 | 670 | 730 | 280 | 22 | 20 | 141 | - | B3M 55 | 2½" | 305 | 40 |
| 21/24 | 100 | 625 | 350 | - | - | 487 | 820 | 880 | 325 | 26 | 25 | 146 | - | B3M 60 | 3" | 485/503 | 80 |
| 27 | 120 | 700 | 385 | - | - | 522 | 890 | 960 | 390 | 29 | 25 | 184 | - | B3M 70 | 3½" | 800 | 115 |
| 29 | 120 | 750 | 435 | - | - | 562 | 970 | 1040 | 440 | 29 | 25 | 184 | - | B3M 80 | 3½" | 110 | 142 |

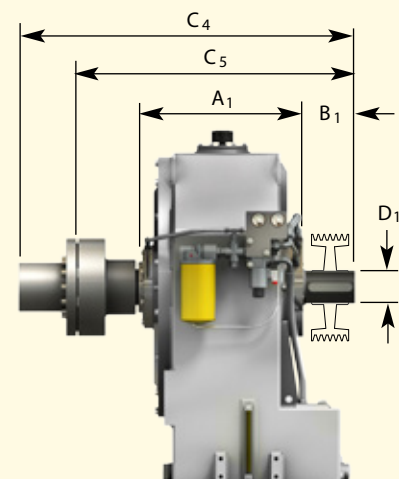
KPTB with flexible coupling



KPTB with gear coupling



KPTE* pulley version



* For admissible radial loads refer to TF 6093-A

Dimensions can be changed without notice

Tables for the preliminary selection of the coolers:

- KPTB with single oil pump (with flow control valve if used as variable speed drive)
- Refer to variable speed drive or start up drive column
- Max power = max power absorbed at max speed
- Output water temperature 35°C

| Variable speed application | | | |
|--------------------------------|--------------------------|-------------------------------------|-------------------------------------|
| Fluid Coupling max. power (kW) | Water - Oil Cooler Model | Required Water Flow (l/min) at 25°C | Air - Oil Cooler Model (air = 30°C) |
| 100 | 05048• | 31 | GATF5940B E |
| 150 | 05048• | 47 | GATF5940B K |
| 200 | 06060• SP3-1 1•• | 62 | GATF5940B O |
| 300 | 06060• SP3-1 1•• | 94 | GATF5940B S |
| 400 | 06096• SP3-19• • | 125 | GATF5940B W |
| 500 | 08084• SP3-31• • | 157 | GATF5940B W |
| 600 | 08084• SP3-31• • | 188 | GATF5940C A |

| Start-up application | | | |
|--------------------------------|--------------------------|-------------------------------------|-------------------------------------|
| Fluid Coupling max. power (kW) | Water - Oil Cooler Model | Required Water Flow (l/min) at 25°C | Air - Oil Cooler Model (air = 30°C) |
| 100 | 03014• | 8 | GATF5940C K |
| 150 | 03024• | 11 | GATF5940C K |
| 200 | 03024• | 15 | GATF5940C K |
| 300 | 05024• | 23 | GATF5940C K |
| 400 | 05048• | 31 | GATF5940C K |
| 500 | 05048• | 39 | GATF5940C L |
| 600 | 05048• | 47 | GATF5940C L |
| 700 | 06060• SP3-1 1•• | 55 | GATF5940C M |
| 800 | 06060• SP3-1 1•• | 62 | GATF5940C M |
| 900 | 06060• SP3-1 1•• | 70 | GATF5940C M |
| 1000 | 06060• SP3-1 1•• | 78 | GATF5940C M |
| 1200 | 06060• SP3-1 1•• | 94 | GATF5940B S |
| 1400 | 06096• SP3-19• • | 110 | GATF5940B S |
| 1600 | 06096• SP3-19• • | 125 | GATF5940B W |

* Tube bundle heat exchanger

** Plate heat exchanger

AUSTRALIA

TRANSFLUID AUSTRALIA PTY LTD
Smithfield NWS 2164
Ph. +61.297572655
Fax +61.297560181
tfaustralia@transfluid.it

CHINA

TRANSFLUID BEIJING TRADE CO.LTD
101300 Beijing
Ph. +86.1060442301-2
Fax +86.1060442305
tbtcinfo@sina.com

FRANCE

TRANSFLUID FRANCE s.a.r.l.
38110 Rochetoirin
Ph. +33.9.75635310
Fax +33.4.26007959
tffrance@transfluid.it

GERMANY

TRANSFLUID GERMANY GmbH
D-48529 Nordhorn
Ph. +49.5921.7288808
Fax +49.5921.7288809
tfgermany@transfluid.it

RUSSIA

TRANSFLUID OOO
143100 Moscow
Ph. +7.495.7782042
Mob. +7.926.8167357
tfrussia@transfluid.it

U.S.A.

TRANSFLUID LLC
Auburn, GA 30011
Ph. +1.770.8221.777
Fax +1.770.8221.774
tfusa@transfluid.it

LOCAL DISTRIBUTOR

Global web site: www.transfluid.eu
E-commerce web site: www.buy-transfluid.com