

TRANSFLUID

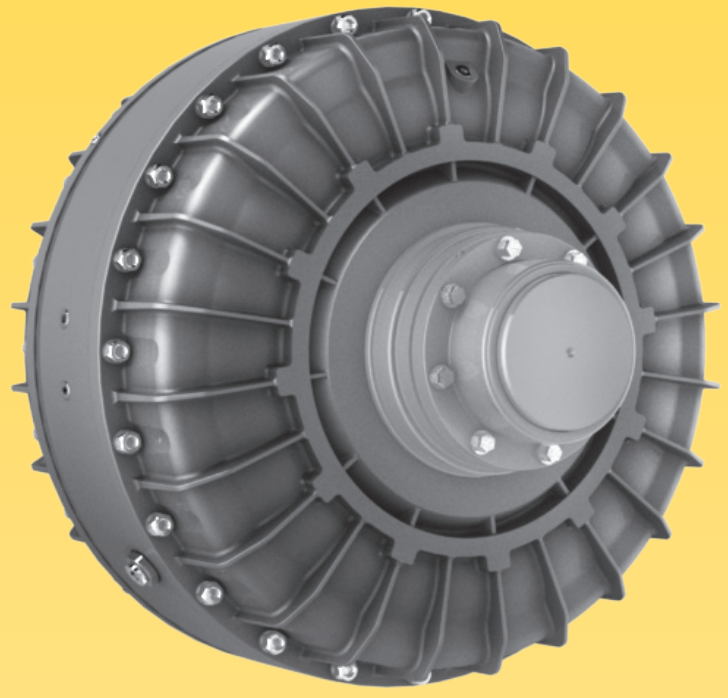


drive with us



TRANSFLUID[®]

industrial & marine



KX
FLUID COUPLINGS KX SERIES

FLUID COUPLINGS – KX series

DESCRIPTION

The KX is a fluid coupling with a special patented fluid circuit designed to start up large inertia machines driven by electric motors.

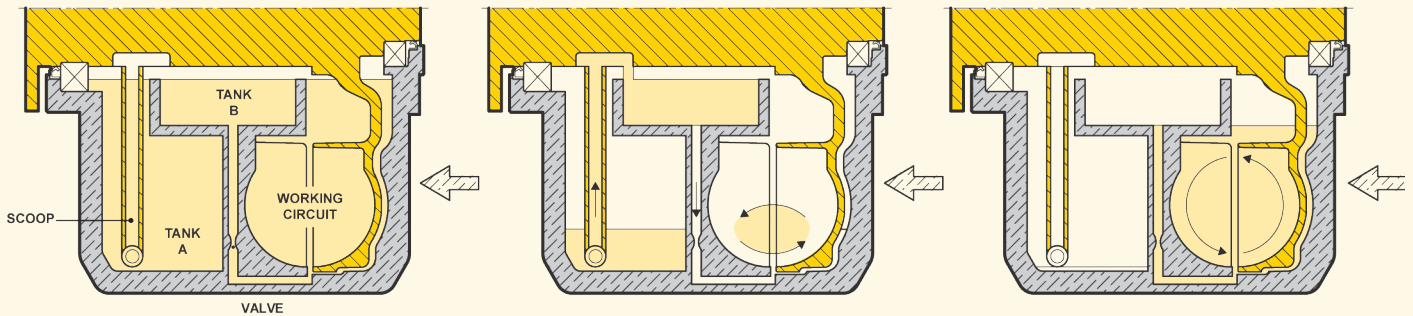
The circuit includes two internal tanks connected by two scoops allowing bi-directional motor operation.

The scoop works like a differential pump transferring fluid from one chamber to the other and finally into the coupling working fluid circuit through external adjustable valves. This double passage allows a long starting time with very low starting torque and current absorption by the electric motor, virtually isolating the effect of the inertia of driven machine

STILL (STATIONARY)

START UP

STEADY RUNNING



- DRIVING PART (OUTER WHEEL DRIVE ONLY)**
- DRIVEN PART**
- OIL**

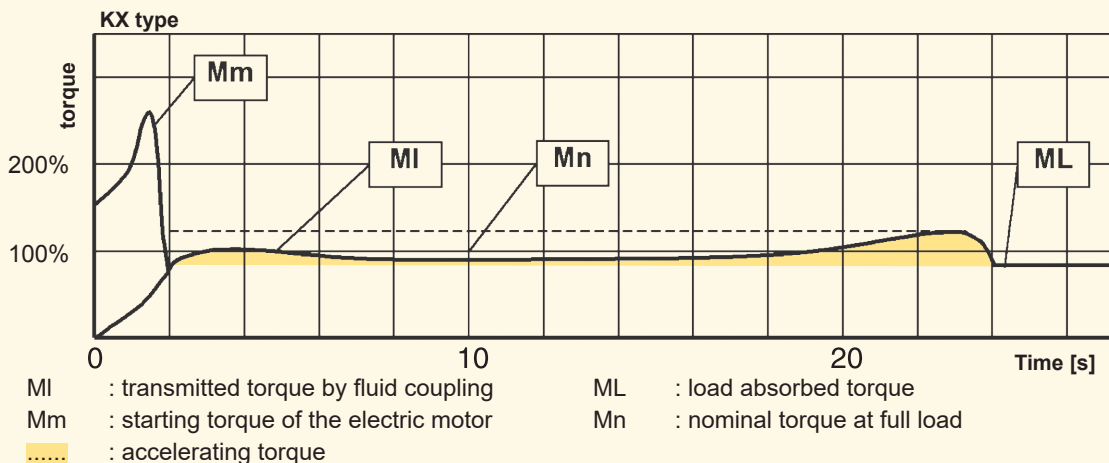
The fluid quantity in the working circuit is less than in traditional constant fill fluid couplings, as the fluid level is much lower than the rotating axis.

The reduced fluid quantity in the working circuit allows low starting torque. During input rotation the scoop transfers the fluid from tank A to tank B and then, through an adjustable valve for start up time regulation, to the working circuit.

At steady running, the working circuit is completely filled with fluid for minimum slip

MAIN FEATURES

- Very low stall torque
- starting torque limitation also below nominal torque
- dynamically balanced
- two versions: KXG with gear couplings and KXD with maintenance free disc couplings. Both designs allow the fluid coupling removal without moving the electric motor or the driven machine avoiding the realignment
- the bearings are greased for life and additionally protected by two double seals
- all rotating seals and O-rings are in viton
- the coupling can work either with oil or water (or glycol)
- KX fluid couplings with ATEX certification for gas and dust explosion protection
- the coupling has the external impeller working as driver (outer wheel drive); only horizontal installation is possible
- the fluid filling operation is quite easy and apart from some particular cases, it is not required to change fluid during the commissioning: the starting time can be optimized by changing the externally adjustable valves
- both brake disc or drum can be mounted upon request
- KX fluid coupling is very suitable for driving machines having large powers and inertias: typical applications are mills and belt conveyors



THE ADVANTAGES OF FLUID COUPLINGS

SELECTION TABLE

SIZE	1800 rpm		1500 rpm		1200 rpm		1000 rpm	
	kW	HP	kW	HP	kW	HP	kW	HP
15	75	100	55	75	30	40	22	30
19	160	220	132	180	75	100	45	60
24	400	544	315	430	200	270	110	150
27	700	952	510	700	250	340	160	220
29	1000	1360	810	1100	440	598	320	435

CENTER OF GRAVITY			
KXG		KXD	
g	l	g	l
115	155	113	156
182	188	183	184
305	222	320	215
413	270	436	245
549	288	580	258

MOMENT OF INERTIA J (WR ²)					
KXG		KXD			
a	b	d	d ₁	e	e ₁
0.299	2.863	0.091	0.121	0.091	0.102
0.978	3.713			0.101	0.121
3.233	10.346	0.145	0.375	0.210	0.173
4.163	19.840	0.500	0.934	0.486	0.887
6.023	27.187				

g = Total weight, including fluid (max fill)

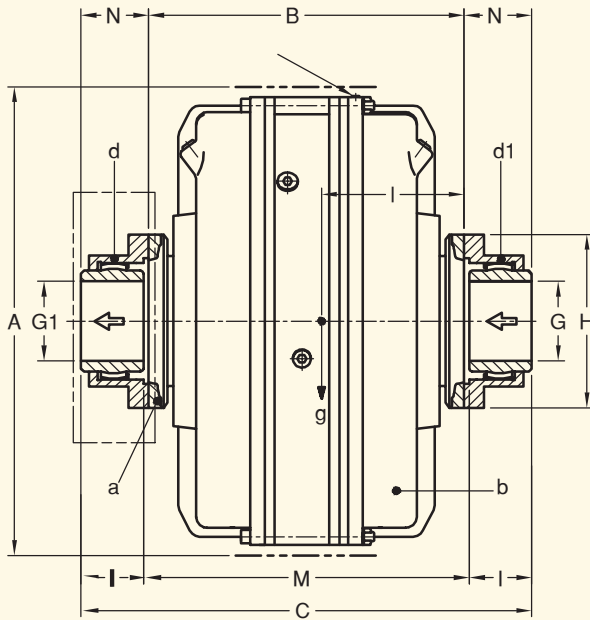
a = Internal element - b = external element

d - e = half flexible coupling (output)

d₁ - e₁ = half flexible coupling (input)

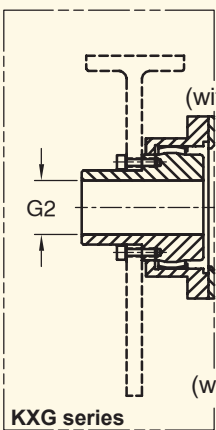
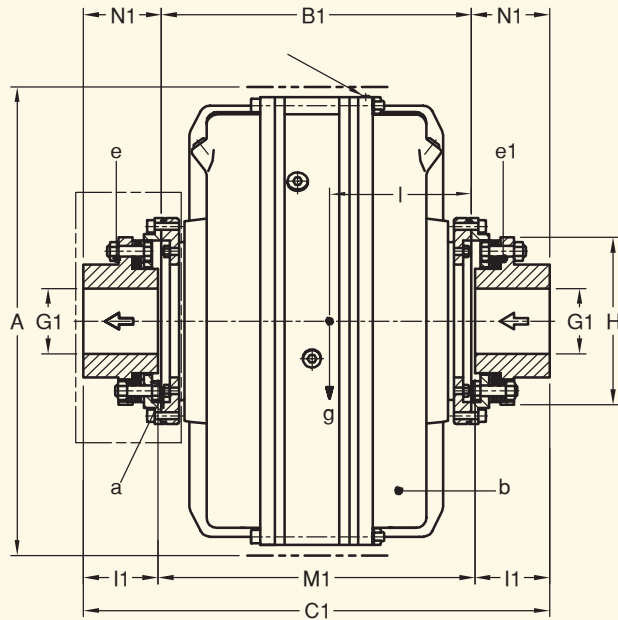
KXG

FUSIBLE PLUGS (109°C OR 120°C)



KXD

FUSIBLE PLUGS (109°C OR 120°C)



KXGB
(with brake drum)

Brake drum or disc upon request

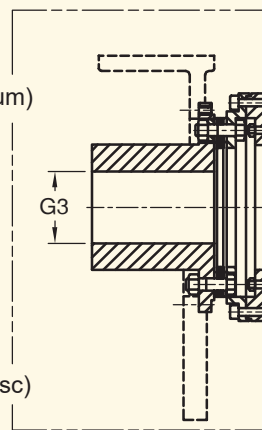
KXGBP
(with brake disc)

KXG series

KXDB
(with brake drum)

KXDBP
(with brake disc)

KXD series



SIZE	G2	I2	G3	13	
				std.	max
15	65	149.4	80	150	170
19	65	149.4	95	160	210
24	90	165.1	120	160	240
27	110	184.2	145	180	240
29	110	184.2	145	180	240

SIZE	A	B	C	G _{max}	H	I	M	N	Gear coupling size
15	500	367	526	95	213	76	374	79.5	2"½ E.I.
19	610	435	594				442		
24	770	506	693	111	240	90	513	93.5	3" E.I.
27	830	626	845	134	280	105	635	109.5	3"½ E.I.
29	900	655	874				664		

SIZE	A	B ₁	C ₁	G ₁ max	H ₁	I ₁	M ₁	N ₁	Disc coupling size
15	490	362	507	75	166	70	367	72.5	1075
19	595	429	604	90	192	85	434	87.5	1085
24	745	505	730	115	244	110	510	112.5	1110
27	810	576	862	135	300	140	582	143	1140
29	890	605	891				611		

Weight kg (without fluid)	Fluid max l	
	KXG	KXD
107	105	8.5
168	169	15.5
276	291	32
371	394	46
495	526	59

Dimensions are subject to alteration without notice

drive with us

OTHER TRANSFLUID PRODUCTS

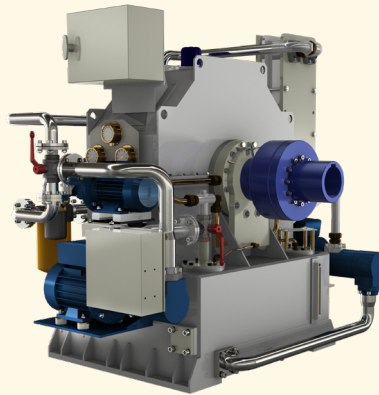
**FLUID COUPLING
K SERIES**

Oil or water constant fill
Up to 3,352 hp



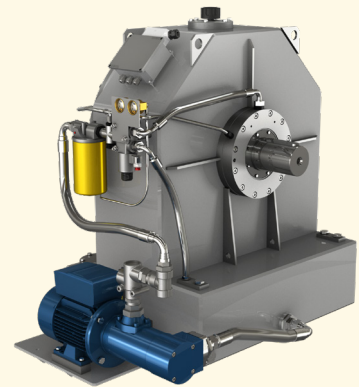
**FLUID COUPLING
KSL SERIES**

Start up and variable
speed drive
Up to 5,364 hp



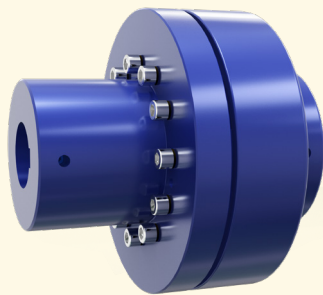
**FLUID COUPLING
KPT SERIES**

Start up and variable
speed drive
Up to 2,279 hp



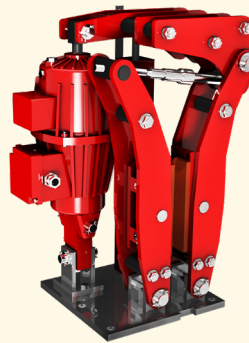
**FLEXIBLE COUPLING
BM-B3M SERIES**

Up to 24,414 ft/lbs



**DISC AND DRUM BRAKE
NBG-TFDS SERIES**

Up to 14,014 ft/lbs



**PNEUMATIC CLUTCH
TP SERIES**

Up to 8,482 ft/lbs



U.S.A

TRANSFLUID LLC
Auburn, GA 30011
Ph.: +1.770.822.1777
salesna@transfluid.us

Global website: www.transfluid.eu • **North American website:** www.transfluid.us

TRANSFLUID S.p.A • Via Guido Rossa, 4 • 21013 Gallarate (VA) Italy • Ph. +39 0331 28421 • info@transfluid.eu

2412 - 160 GB