

TRANSFLUID

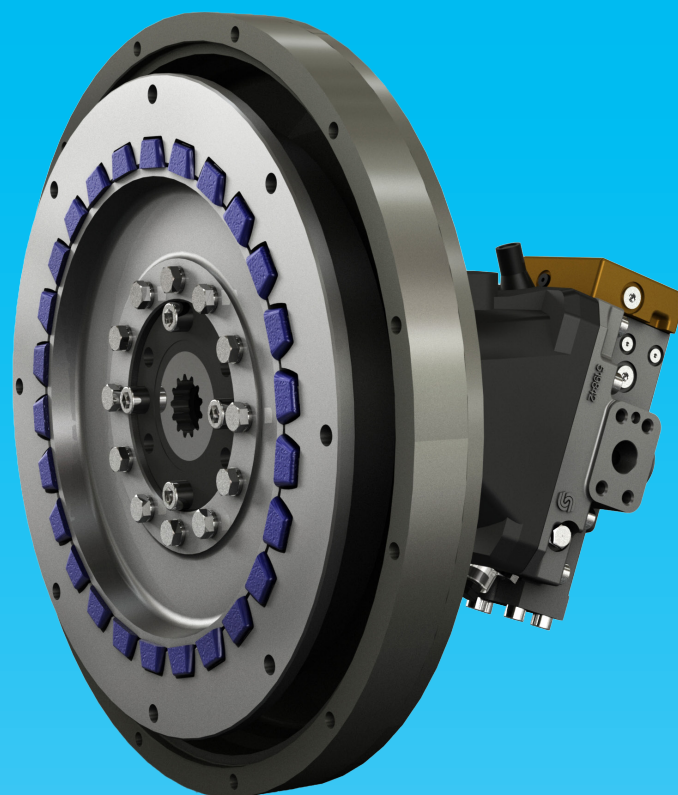


drive with us



TRANSFLUID[®]

industrial & marine



RBD

elastic couplings

SRBD

single pump drive

PF

pto

RBD COUPLINGS

DESCRIPTION

The RBD drives are designed for use with industrial engines in stationary applications such as generators, pumps and compressor sets, and in mobile applications like fork lift trucks and earth moving equipment. RBD drives have many advantages: ease of assembly, weight and size, small axial profile and competitive price. Drives are supplied with standard SAE flanges for ease of installation.

CONFIGURATION

- with or without hub
- with spline or keyway (min. q.ty required)
- with conical locking coupling (standard)
- with housing for hydrostatic drives

TECHNICAL FEATURES

The drive principle uses internal and external teeth; the difference is that the external teeth are blocks of special rubber molded compound.

By changing the rubber compound, various torques can be transmitted.

The external aluminum ring has a profile corresponding to the rubber molded compound and can be directly mounted on the output flange of the prime mover, allowing it to absorb small angular and radial misalignments.

SELECTION ¹⁾

$$T_{KN} > T_{LN} \cdot St \quad (T_{LN} = \text{load torque}; St = 1.3)$$

$$T_{Kmax} > T_{LS} \quad (T_{LS} = \text{load peak torque})$$

$$T_{KNAtex} > T_{LN} \cdot St_{Atex} \quad (T_{LN} = \text{load torque}; St_{Atex} = 1.56)$$

¹⁾ For torsional vibration calculation, contact TRANSLUID.

On request other rubber blocks with elastic features and hardness different from the standard are available. For details please contact TRANSLUID.



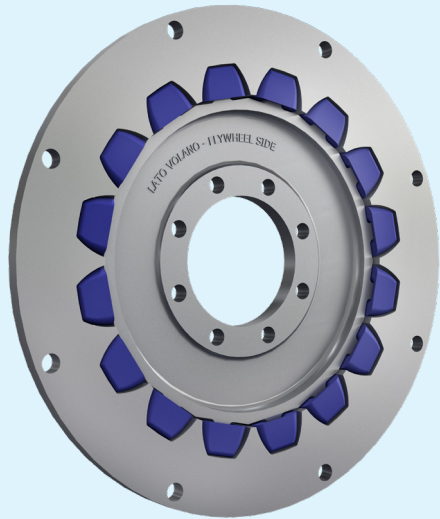
Size	Nr. of blocks	Max. rpm	Torque - Nm (70° shore)		
			Nominal Torque TKN	Max. Torque TKmax	Continuous Vibratory Torque tkw (10 Hz) ²⁾
6S-7S-8S	12	4500	310	710	155
10S-10SS	16	4000	560	1370	280
11S	20	3500	860	2150	430
11D	20	3300	2060	6530	1030
14S	28	2800	1690	4220	845
14D	26	2800	3490	11040	1745
18D	32	2400	5300	16720	2650

Ambient temperature -40°C + 120°C

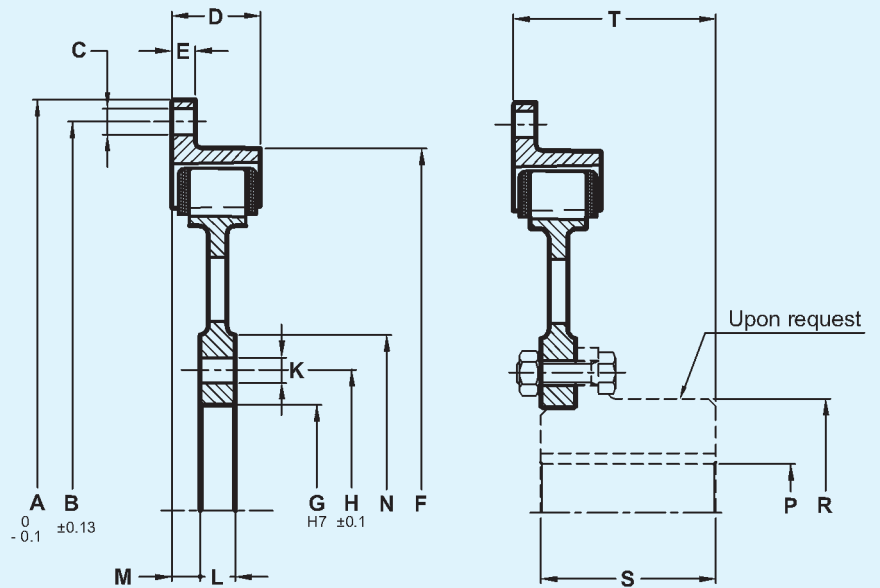
$$\supset \text{For other frequency: } TKW \cdot \sqrt{\frac{10}{fx}}$$

Size	Static stiffness ±5% (Nm/rad)		J (kgm ²)					Weight (kg)	
			Drive	Driven		Drive+Driven		Flanged	With hub
	CT	CTdyn		Flanged	With hub	Flanged	With hub		
6S	20000	30000	0.006	0.005	0.006	0.010	0.011	1.4	2.6
7S	20000	30000	0.008	0.005	0.006	0.012	0.013	1.6	2.8
8S	20000	30000	0.011	0.005	0.006	0.016	0.016	1.8	3
10S	48000	72000	0.017	0.010	0.015	0.027	0.032	2.5	5.2
10SS	48000	72000	0.022	0.010	0.015	0.032	0.037	2.9	5.6
11S	93000	100000	0.035	0.025	0.035	0.060	0.070	3.3	8.2
11D	461000	691000	0.082	0.055	0.080	0.137	0.162	7	15.5
14S	206000	309000	0.180	0.110	0.135	0.290	0.315	7.3	16.8
14D	1010000	1515000	0.187	0.142	0.202	0.330	0.390	10.1	23.4
18D	1885000	2827000	0.652	0.177	0.652	0.830	1.305	16.6	50
Relative damping		$\psi = 0,7263$							
Resonance factor		VR = 8,65							

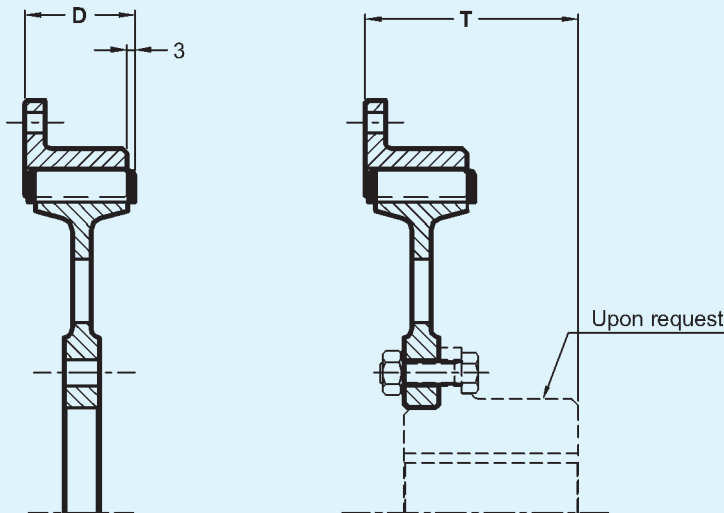
RBD COUPLINGS



RBD WITH SINGLE RUBBER BLOCKS

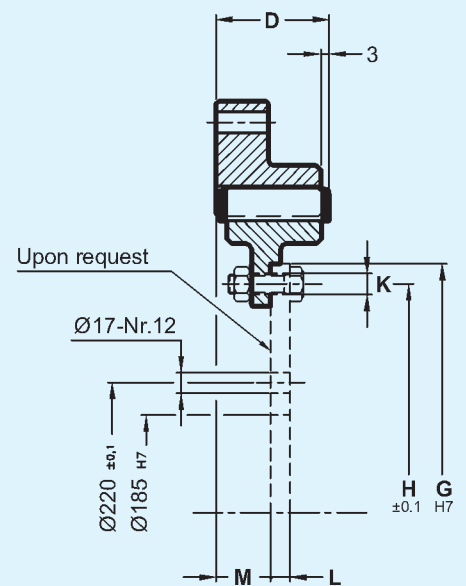


RBD WITH DOUBLE RUBBER BLOCKS



Maximum parallel and angular misalignment 0.7 mm (T.I.R.)

RBD 18D WITH DOUBLE RUBBER BLOCKS



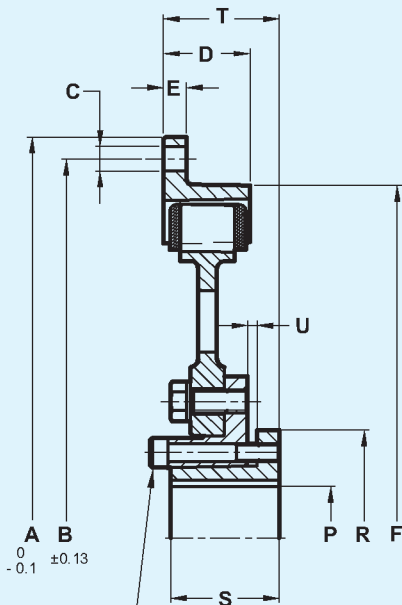
Size	A	B	C		D	E	F	G	H	K		L	M	N	P		R	S	T
			Nr.	dia.						Nr.	dia.				Min	Max			
6S	215.9	200	6	9	34	9	202	70.5	84	6	9	10	12	100	20	42	65	50	61
7S	241.3	222.2	8																
8S	263.525	244.5	6																
10S	258 ¹⁸	265	8	11	34	34	285	82	101.5	8	11	12	11	120	30	50	78	65	76
10SS	314.325	295.3				10	255												
11S	352.425	333.4	8	11	38	10	310	101	120	12	11	15	12	150	30	65	98	75	87
11D					70	67	352.42	120	150										
14S	466.725	438.2	8	13.5	41	41	466.72	120	150	12	13	15	13	180	45	90	128	90	100
14D					70	13	406	150	180										
18D	571.5	542.9	6	17	70	32.5	490	368.3	342.9	16	13	12	34	-	-	-	-	-	-

• Possible with version of 16 bolts; 8 shrouded and 8 exposed

DIMENSIONS ARE SUBJECT TO CHANGE WITHOUT NOTICE

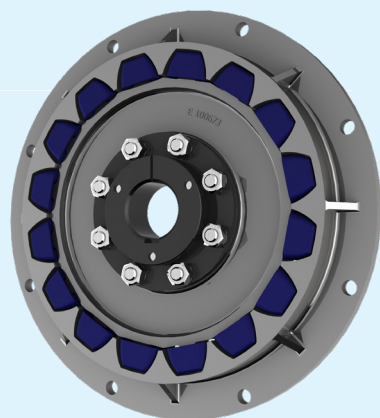
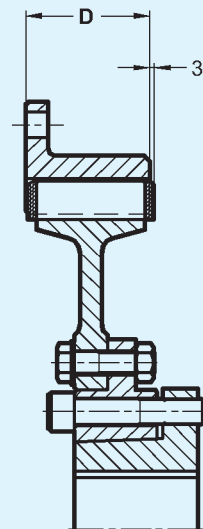
RBD COUPLINGS WITH QD

RBD-QD WITH SINGLE RUBBER BLOCKS



BLOCKING SCREW

RBD-QD WITH DOUBLE RUBBER BLOCKS



Maximum parallel and angular misalignment 0.7 mm (T.I.R.)

The hub with conical locking coupling (QD) allows:

- ease of assembly
- high torque transmission
- quick disassembly without using special tools
- positive contact between locking hub and shaft eliminates contact fretting

Size	Bush	A	B	C		D	E	F	P				R	S	T	U	Bolt Material 8.8		
				Nr.	dia.				min	max *	max **	max ***					Nr.	dimension	Locking torque (Nm) (ft/lbs)
6S-QD	SH	215.9	200	6	9	34	9	202	10	35	38	42	68.3	31.5	46.5	3	3	M8x35	18 (13)
7S-QD		241.3	222.2	8															
8S-QD		263.525	244.5	6															
10S-QD	SDS	285 ¹⁸	265	8	11	34	34 10	285	13	42	45	50	81	33.5	47.5	3	3	M8x35	24 (17)
10SS-QD		314.325	295.3																
11S-QD	SK	352.425	333.4	8	11	38	10	310	13	55	60	65	98.5	47.5	56	3	3	M10x50	40 (29)
11D-QD	SF					70	67	352.42	13	60	65	70	117.5	51	63/90		4	M12x55	75 (55)
14S-QD	SF	466.725	438.2	8	13.5	41	41	466.72	13	60	65	70	117.5	51	61	3	4	M12x55	75 (55)
14D-QD	E					70	13	406	22.5	75	80	90	152.4	66.5	93			M14x70	120 (88)
18D-QD	J	571.5	542.9	6	17	70	32.5	490	76.2	100	105	120	184.2	117.5	141.5	8	4	M16x120	165 (121)

DIMENSIONS ARE SUBJECT TO CHANGE WITHOUT NOTICE

* max with keyway ISO 773

** max with reduced keyway DIN 6885/2

*** max without keyway

• Possible with version of 16 bolts; 8 shrouded and 8 exposed

SRBD SINGLE PUMP DRIVES

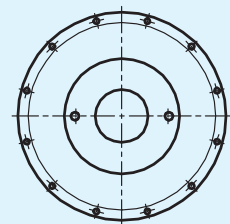
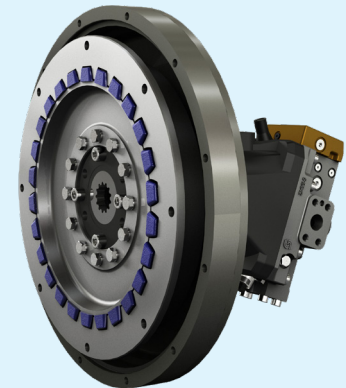
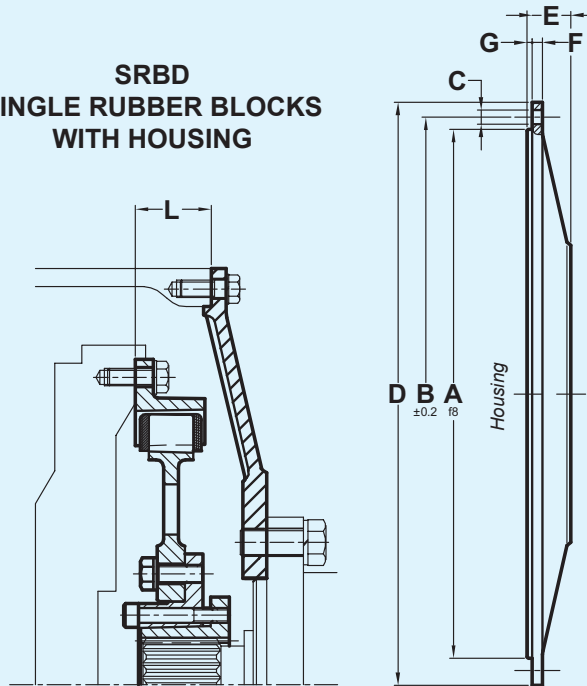
SRBD Single pump drive

The single pump drive is a whole kit that includes all the components to connect a Diesel engine to a pump.

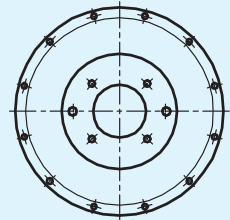
Components are:

- RBD coupling
- QD bushing (machined)
- SAE housing with inch threaded holes

SRBD SINGLE RUBBER BLOCKS WITH HOUSING



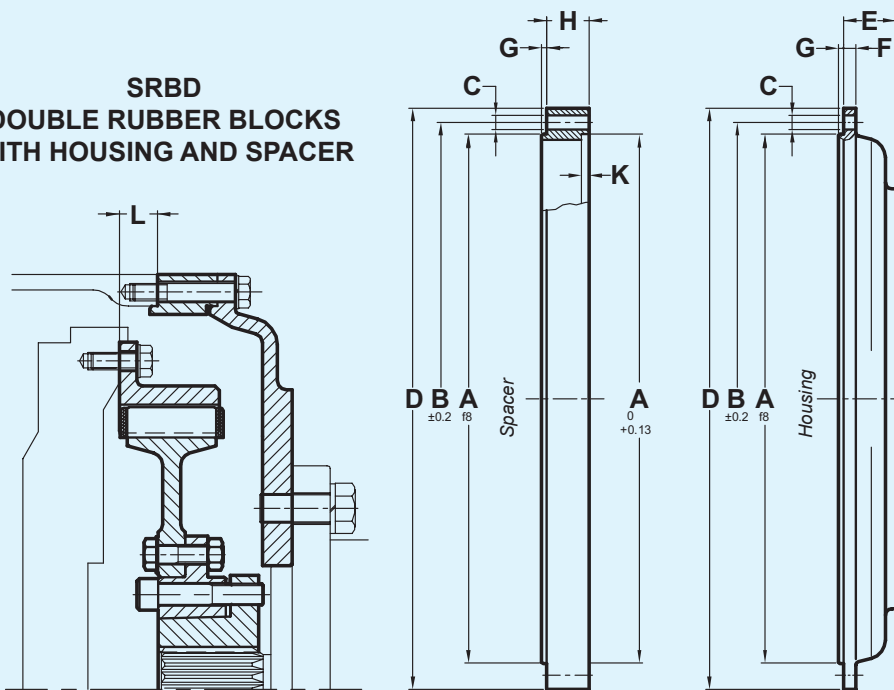
2 HOLES (SAE A)



6 HOLES

The internal flanging of housings is suitable for SAE pumps with 2 or 4 holes

SRBD DOUBLE RUBBER BLOCKS WITH HOUSING AND SPACER



Flywheel SAE J620	RBD	L
6½"	6S	30.2
7½"	7S	
8"	8S	62
10"	10SS	53.8
11½"	11S - 11D	39.6
14"	14S - 14D	25.4
18"	18D	15.7

HOUSING FOR FLYWHEEL SAE J617

SAE	A	B	C		D	E	F	G max	H	K min	WEIGHT (Housing) kg			WEIGHT (Spacer) kg				
			Nr.	Dia.														
5	314.32	333.37	8	11	356	30	8	4	/	/	16.8			/				
4	361.95	381.00	12		404	12	30		8	16	/	/	10	12.7		/		
3	409.57	428.62			451	12	30		45	12	28	40	8	13	14	15.1	7.2	10.4
2	447.67	466.72	489		12	552	50	12	21		8	21.7			5.9			
1	511.17	530.22	5	21					35	40	9	27			7.1	12.1	14	

DIMENSIONS ARE SUBJECT TO CHANGE WITHOUT NOTICE

drive with us

SRBD SINGLE PUMP DRIVES

SAE SINGLE PUMP DRIVE ASSEMBLY (ELASTIC COUPLING)								
Engine Housing SAE J617 & Flywheel SAE J620		5-6 1/2" RBD 6S TkN 310 Nm 228 ft/lbs	4-6 1/2" RBD 6S TkN 310 Nm 228 ft/lbs	5-7 1/2" RBD 7S TkN 310 Nm 228 ft/lbs	4-7 1/2" RBD 7S TkN 310 Nm 228 ft/lbs	4-8" RBD 8S TkN 310 Nm 228 ft/lbs	3-8" RBD 8S TkN 310 Nm 228 ft/lbs	4-10" RBD 10SS TkN 560 Nm 413 ft/lbs
Pump SAE J744								
SAE A 9T 16/32 2 bolts	B.O.M	ALA3636ABC	ALA3636ABD	ALB3637ABC	ALB3637ABD			
SAE B 13T 16/32 2-4 bolts	B.O.M	ALA3636ACE	ALA3636ACF	ALB3637ACE	ALB3637ACF	ALC3638AAA	ALC3638AAB	ALE3640AAA
SAE B-B 15T 16/32 2-4 bolts	B.O.M	ALA3636ADE	ALA3636ADF	ALB3637ADE	ALB3637ADF	ALC3638ABA	ALC3638ABB	ALE3640ABA
SAE C 14T 12/24 2-4 bolts	B.O.M					ALC3638ACC	ALC3638ACD	ALE3640ACC
SAE C-C 17T 12/24 2-4 bolts	B.O.M					ALC3638ADC	ALC3638ADD	ALE3640ADC
SAE D 13T 8/16 2-4 bolts	B.O.M							
SAE E 13T 8/16 2-4 bolts	B.O.M							

SAE housings 2-4 bolts supplied with 6 hole with six plastic industrial plugs.

SINGLE PUMP DRIVE WITH DIN 5480 SPLINE ASSEMBLY (ELASTIC COUPLING)					
Engine Housing SAE J617 & Flywheel SAE J620		4-10" RBD 10SS TkN 560 Nm 413 ft/lbs	3-10" RBD 10SS TkN 560 Nm 413 ft/lbs	3-11 1/2" RBD 11S TkN 860 Nm 634 ft/lbs	2-11 1/2" RBD 11S TkN 860 Nm 634 ft/lbs
Pump DIN 5480 spline shaft					
N30x2x14x9H SAE C 2-4 bolts	B.O.M	ALE3640AEC	ALE3640AED		
N35x2x16x9H SAE C 2-4 bolts	B.O.M	ALE3640AFC	ALE3640AFD	ALF3641AFB	ALF3641BFC
N35x2x16x9H SAE D 2-4 bolts	B.O.M		ALE3640AFE	ALF3641AFE	ALF3641BFF
N40x2x18x9H SAE C 2-4 bolts	B.O.M	ALE3640AGC	ALE3640AGD	ALF3641AGB	ALF3641BGC
N40x2x18x9H SAE D 2-4 bolts	B.O.M		ALE3640AGE	ALF3641AGE	ALF3641BGF
N45x2x21x9H SAE D 2-4 bolts	B.O.M			ALF3641AHE	ALF3641BHF
N50x2x24x9H SAE D 2-4 bolts	B.O.M			ALF3641AKE	ALF3641BKF
N50x2x24x9H SAE E 2-4 bolts	B.O.M			ALF3641BKH	ALF3641BKK
N55x2x26x9H SAE D 2-4 bolts	B.O.M				
N55x2x26x9H SAE E 2-4 bolts	B.O.M				

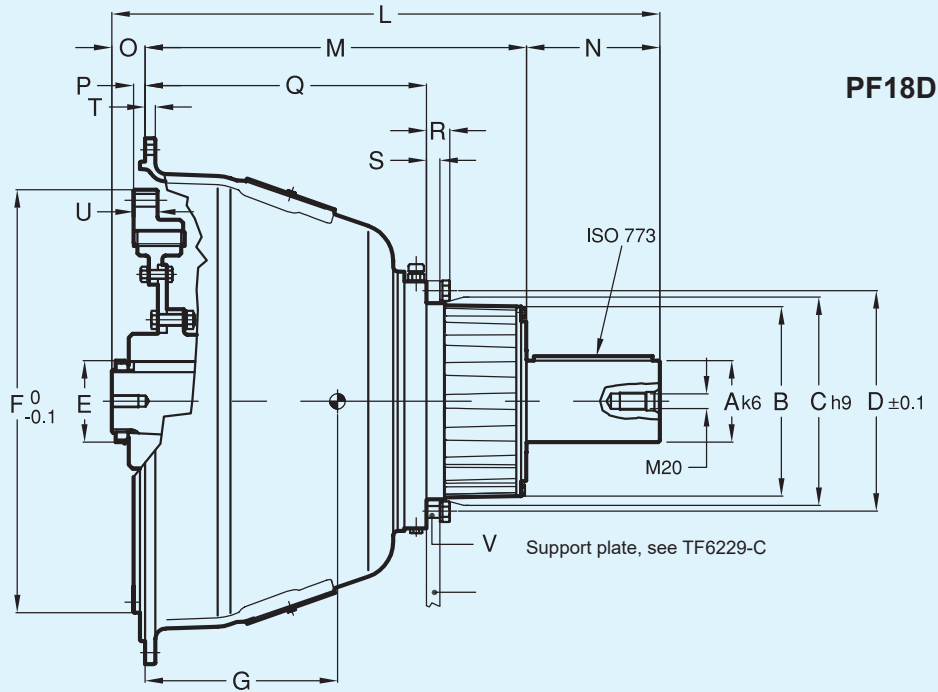
SAE housings 2-4 bolts supplied with 6 hole with six plastic industrial plugs.

SRBD SINGLE PUMP DRIVES

PLING+MACHINED QD BUSHING+HOUSING+SPACER)								
3-10" RBD 10SS TkN 560 Nm 413 ft/lbs	3-11½" RBD 11S TkN 860 Nm 634 ft/lbs	2-11 ½" RBD 11S TkN 860 Nm 634 ft/lbs	1-11½" RBD 11S TkN 860 Nm 634 ft/lbs	3-11 ½" RBD 11D TkN 2060 Nm 1519 ft/lbs	2-11 ½" RBD 11D TkN 2060 Nm 1519 ft/lbs	1-11 ½" RBD 11D TkN 2060 Nm 1519 ft/lbs	1-14" RBD 14S TkN 1690 Nm 1246 ft/lbs	1-14" RBD 14D TkN 3490 Nm 2574 ft/lbs
ALE3640AAB	ALF3641AAA							
ALE3640ABB	ALF3641ABA							
ALE3640ACD	ALF3641ACB	ALF3641BCC	ALF3641BCD	ALF3642AAAA	ALF3642AABB	ALF3642AACC	ALI3643AAA	
ALE3640ADD	ALF3641ADB	ALF3641BDC	ALF3641BDD	ALF3642ABAA	ALF3642ABBB	ALF3642ABCC	ALI3643ABA	ALI3644AAAA
	ALF3641BEE	ALF3641BEF	ALF3641BEG	ALF3642ACDA	ALF3642ACEB	ALF3642ACFC	ALI3643ACB	ALI3644ABBA
	ALF3641BEH	ALF3641BEK	ALF3641BEL	ALF3642ACGD	ALF3642ACHB	ALF3642ACKC	ALI3643ACC	ALI3644ACCA

TIC COUPLING+MACHINED QD BUSHING+HOUSING+SPACER)					
1-11 ½" RBD 11S TkN 860 Nm 634 ft/lbs	3-11 ½" RBD 11D TkN 2060 Nm 1519 ft/lbs	2-11 ½" RBD 11D TkN 2060 Nm 1519 ft/lbs	1-11 ½" RBD 11D TkN 2060 Nm 1519 ft/lbs	1-14" RBD 14S TkN 1690 Nm 1246 ft/lbs	1-14" RBD 14D TkN 3490 Nm 2574 ft/lbs
ALF3641BFD					
ALF3641BFG					
ALF3641BGD					
ALF3641BGG	ALF3642ADDA	ALF3642ADEB	ALF3642ADFC		
ALF3641BHG	ALF3642AEDA	ALF3642AEEB	ALF3642AEFC		
ALF3641BKG	ALF3642AFDA	ALF3642AFEB	ALF3642AFFC	ALI3643ADB	ALI3644ADBB
ALF3641BKL	ALF3642AFGD	ALF3642AFHB	ALF3642AFKC	ALI3643ADC	ALI3644AECB
				ALI3643AEB	ALI3644AFBB
				ALI3643AEC	ALI3644AGCB

RBD POWER TAKE OFF

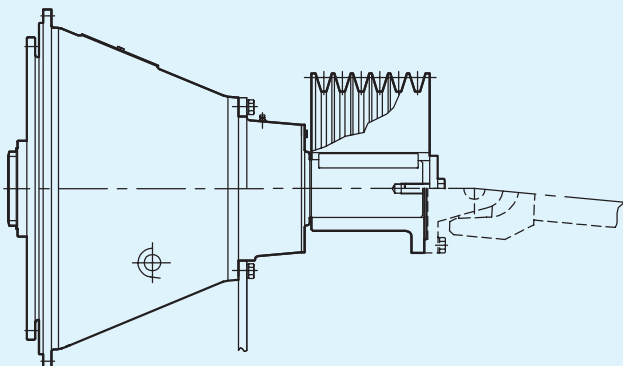


Size	SAE Housing size	SAE Flywheel size	A	B	C	D	E	F	L	M	N	O	P	Q	R	S	T	U	V		W	G CENTER OF GRAVITY
																			Nr.	Dia.		
PF10SS	4	10"	57.15	146.05		-	58	314.325	415.93	251.6	96.84	67.49	53.8	159.37	-	9.53	11.11	10	-	-	66.83	107
PF11S	3	11½"	57.15	146.05	158.75	184.15	58	352.425	466.17	300.66	101.6	63.91	39.6	183.36	-	12.7	11.11	10	6	10.5	96.28	120
PF14S	1	14"	76.2	171.45	190.5	222.25	85	466.725	530.71	348.36	128.27	54.08	25.4	250.83	-	12.7	12.7	41	6	13.5	65.88	146
PF14D			88.9	196.85	222.25	251.62	85		656.83	413.46	189.31	54.06		301.14	-	12.7	12.7	13	6	13.5	75.41	186
PF18D	0	18"	110	258	265	305	85	571.5	740	515	180	45	17.7	380	32	18	14	32.5	6	17	-	210

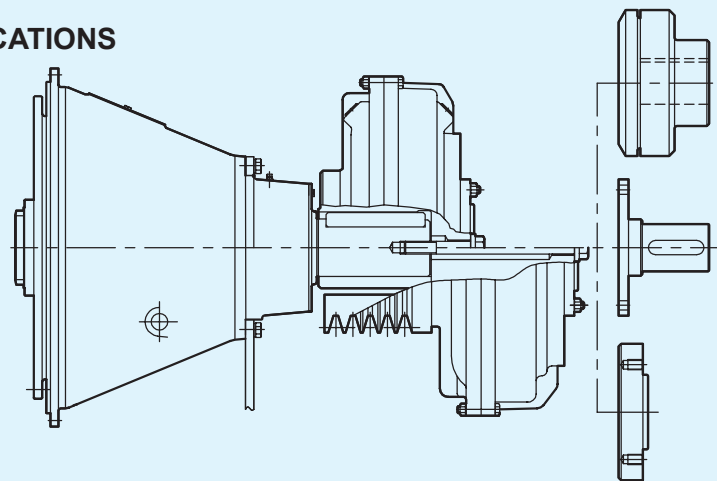
DIMENSIONS ARE SUBJECT TO CHANGE WITHOUT NOTICE

Size	Max speed rpm	Nominal torque Nm (ft/lbs)	Weight kg
PF10SS	4000	560 (413)	41
PF11S	3500	860 (634)	52
PF14S	2800	1690 (1245)	85
PF14D	2800	3490 (2574)	122
PF18D	2400	5300 (3909)	217

APPLICATIONS



PF...WITH PULLEY or CARDAN SHAFT



PF...FLUID COUPLINGS KRG/D/U or KSD

drive with us

RBD – SRBD – POWER TAKE OFF: ATEX AND DATA SHEET

ATEX VERSIONS

It is possible to get a Transfluid RBD, SRBD, PF certified as equipment for intended use in hazardous zones according to directive 94/9/EC (Atex).

The selection must consider, in addition to the service factor S_t , a safety factor (Atex factor) $A_f = 1.2$ to obtain the selection torque.

With reference to selection table in pag. 1, nominal torque T_{KN} has to be higher than load torque $\times S_t \times A_f$:

$$T_{KN} > T_{LN} \times S_t \times A_f = T_{LN} \times S_{tAtex}$$

Certification can be provided for the following categories:

Ex II 3 G/D c T4 Surface (Non-mining) application

Ex II 2 G/D c T4 Surface (Non-mining) application

Ex I M2 c T4 Mining application

In case of inquiry for Atex products, you have to apply providing the application form TF6830 duly filled up.

APPLICATION DATA SHEET

Company:

Ref. person:

Address:

E-mail:

Project:

PRIME MOVER

Diesel engine	N° of cylinder:	<input type="checkbox"/> in line	<input type="checkbox"/> "V"
Installed power:	kW (hp)	Speed:	rpm
MAX torque:	Nm (ft/lbs)	Speed:	rpm

APPLICATION DATA

Flywheel size:	Housing size:		
RBD/SRBD <input type="checkbox"/> for pumps / compressor			
<input type="checkbox"/> for generators:			
Shaft end	<input type="checkbox"/> Spline dimension:	<input type="checkbox"/> Keyway dimension:	

PF <input type="checkbox"/> with fluid cplg			
<input type="checkbox"/> with pulley	Dp: mm	N° and type of grooves	
<input type="checkbox"/> with cardan shaft	cardan type:		
<input type="checkbox"/> with flex cplg			

Weight of pump/s	kg	Center of gravity, distance from flange (SRBD):	mm
Inertia:	kgm ²		
Absorbed power:	kW	speed	rpm

AMBIENT CONDITIONS

Ambient type:	<input type="checkbox"/> Indoor	<input type="checkbox"/> Outdoor	<input type="checkbox"/> Marine
Sea level: m	Min temperature: °C (°F)	Max temperature: °C (°F)	
Dust level:	<input type="checkbox"/> low	<input type="checkbox"/> medium	<input type="checkbox"/> high

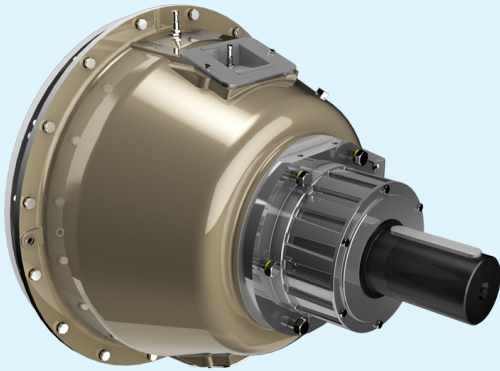
Aggressive agents (please list if any):

Explosive ambient in conformity with:

<input type="checkbox"/> Atex Ex II 3 G/D c T4	Group II - Surface (Non-mining)	Category 3	Temperature T4 (135°C)
<input type="checkbox"/> Atex Ex II 2 G/D c T4	Group II - Surface (Non-mining)	Category 2	Temperature T4 (135°C)
<input type="checkbox"/> Atex Ex I M2 c T4	Group I - mining	Category M2	Temperature T4 (135°C)

OTHER PRODUCTS

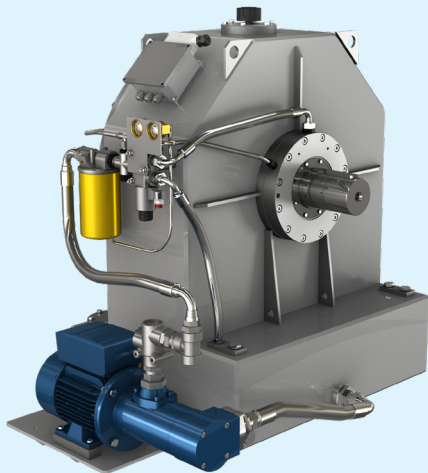
HF SERIES - OIL OPERATED POWER TAKE OFF
 Up to 800 kW (1072 hp)



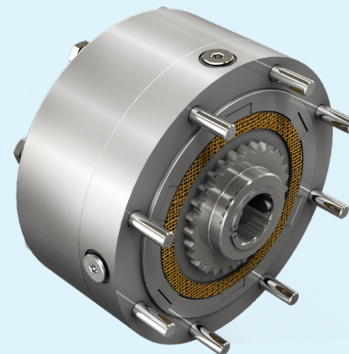
KFBD - FLUID COUPLING PTO
 For internal combustion engines, up to 500 kW (670 hp)



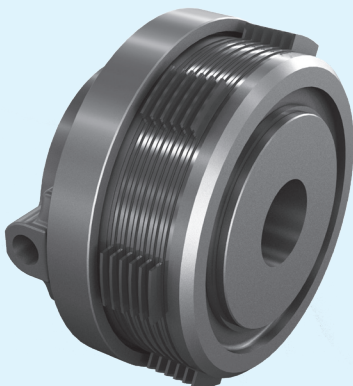
KPTO - FLUID COUPLING
 For internal combustion engines, up to 1700 kW (2279 hp)



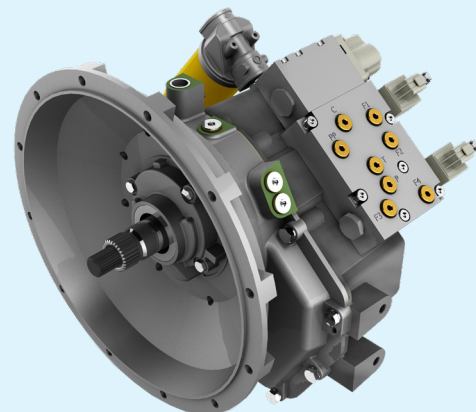
SL - HYDRAULIC BRAKE
 Up to 9000 Nm (6638 ft/lbs)



SH-SHC - HYDRAULIC CLUTCH
 Up to 2500 Nm (1844 ft/lbs)



POWER SHIFT TRANSMISSION
 Electric selector, up to 95 kW (127 hp)



U.S.A.

TRANSFLUID LLC
Auburn, GA 30011
Ph. +1.770.822.1777
Fax +1.770.8221.774
salesna@transfluid.us

ITALY

TRANSFLUID S.p.A.
Via Guido Rossa, 4
21013 Gallarate (VA)
Ph. +39.0331.28421
Fax +39.0331.2842911
info@transfluid.eu

www.transfluid.us

LOCAL DISTRIBUTOR