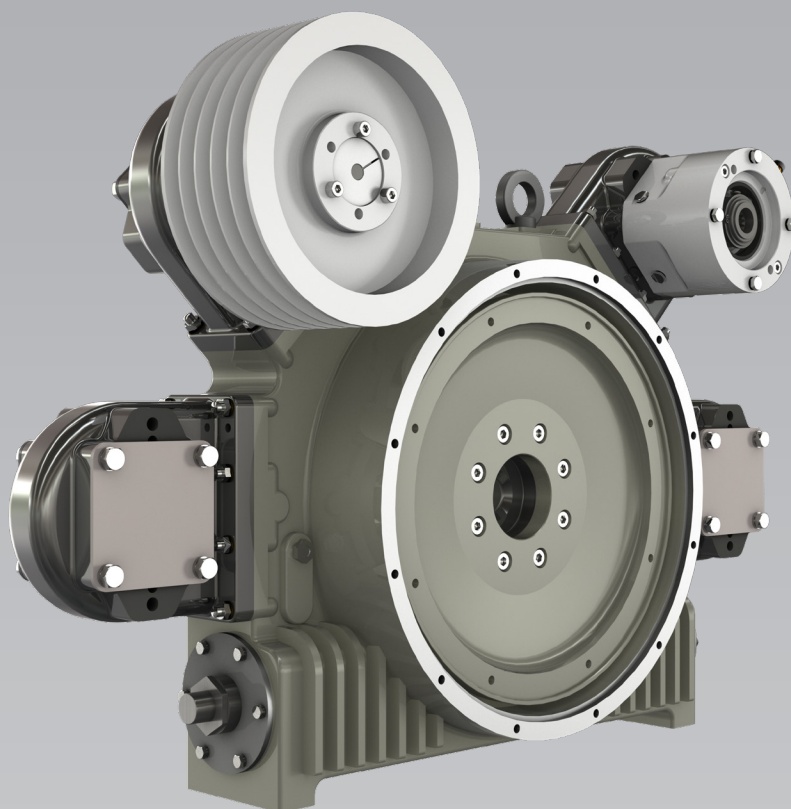


TRANSFLUID



TRANSFLUID[®]

industrial & marine



drive with us

STELLADRIVE

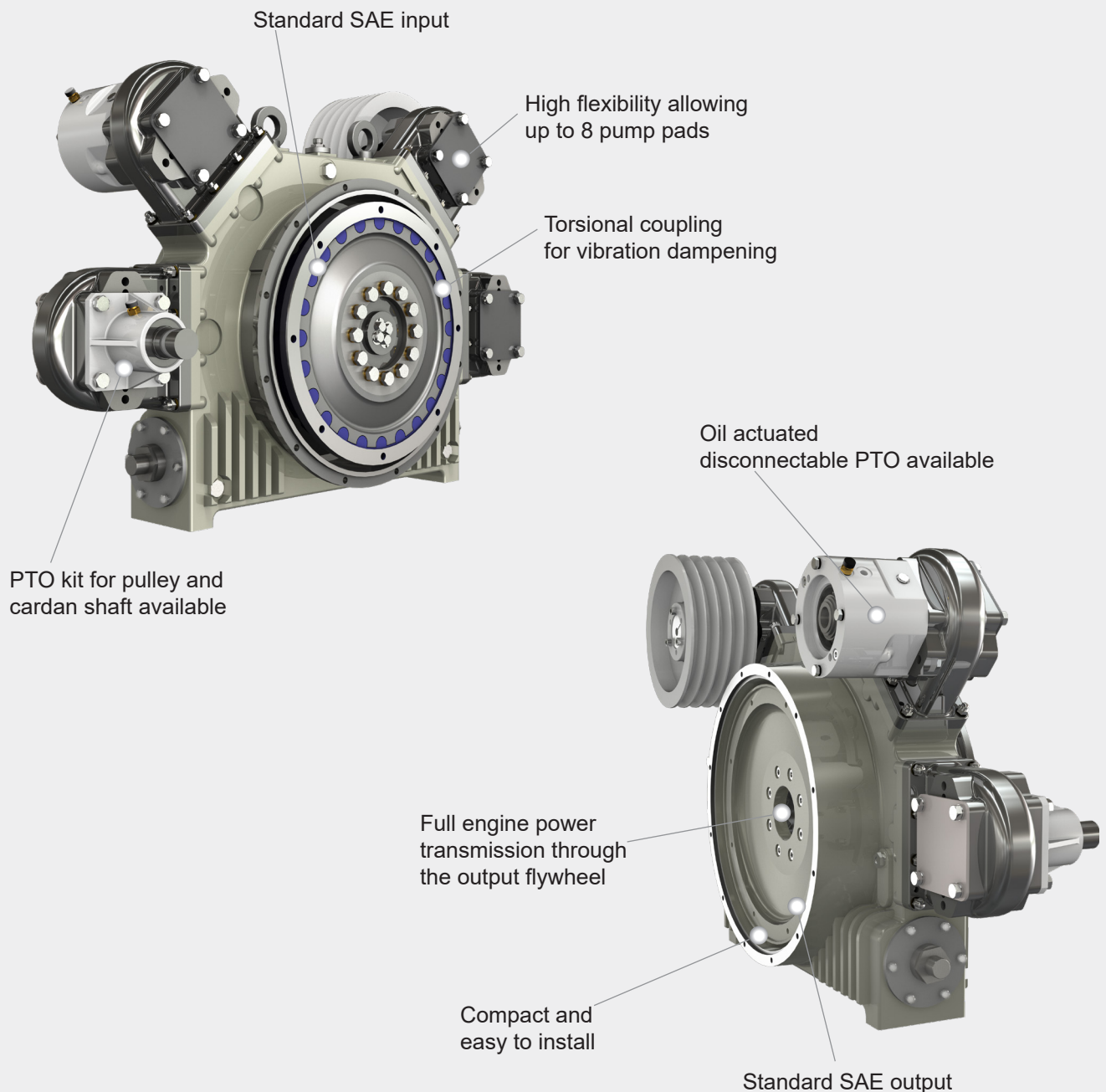
STELLADRIVE

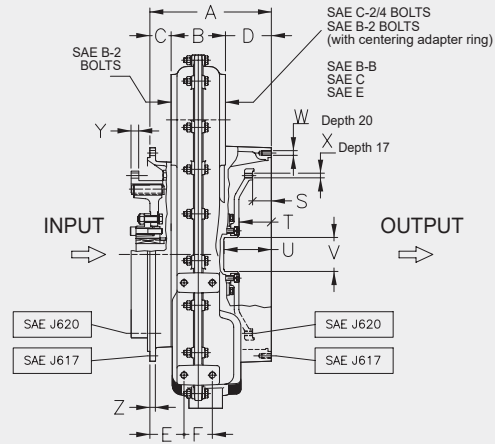
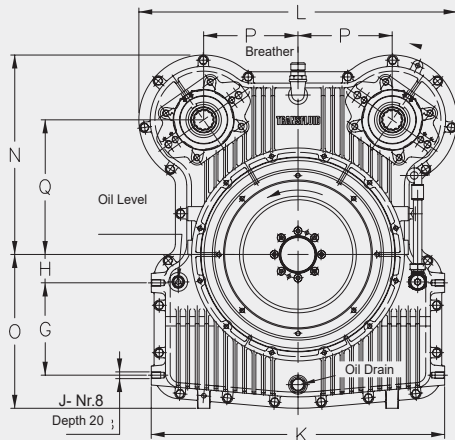
MPD-MULTI PUMP DRIVE

The MPD STELLADRIVE is an innovative module that fits between an engine and a transmission to drive multiple hydraulic pumps or any other suitable implement. The MPD mounts directly to the engine SAE housing and flywheel with an integrated flexible coupling to dampen torsional vibrations and compensate for misalignment.

The output is a SAE dummy flywheel and housing that connects to any SAE driven equipment such as marine gears, PTOs like Transfluid's HFO/HFR (oil/air actuated PTO), KPTO (fluid coupling), PF-PTO (PTO with RBD rubber coupling) or any other SAE transmission type.

The units are self-contained with their own lubrication circuit. Foot mounted designs are available. For installation using an elastic coupling on the output, Transfluid requires coupling details to confirm torsional compatibility of the system.





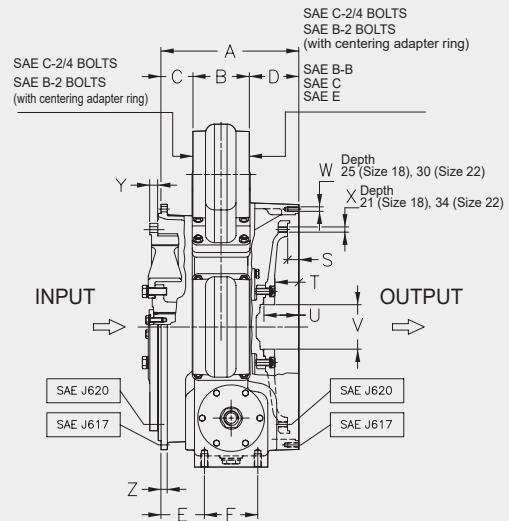
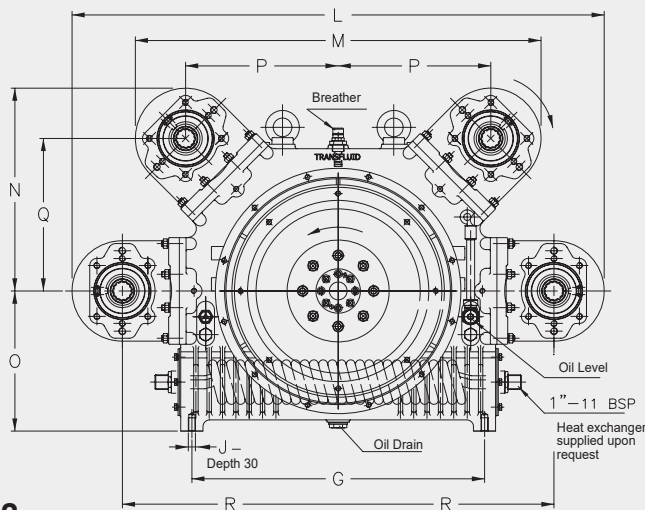
MPD14

DIMENSIONS

Size	INPUT		OUTPUT		A	B	C	D	E	F	G	H	J	K	L	N	O	P	Q	S	T	U	V	W		X		Y	Z
	SAE J617	SAE J620	SAE J617	SAE J620																				Ø	N°	Ø	N°		
14	3	11½"	3	11½"	257	115	45	97	72.5	60	195	60	M14	620	673	422	325	199.2	284.5	39.6	68.1	100	72	M10	12	M10	8	52	12
	1	14"			282																								

TECHNICAL DATA

Size	Weight w/o oil kg	Oil Quantity l	Max speed rpm	Max Input torque ft/lbs	Total Heads hp	Single Head hp	Ratio (n1:n2)
14	195	12.5	2600	1475	234	160	1:1



MPD18-22

DIMENSIONS

Size	INPUT		OUTPUT		A	B	C	D	E	F	G	J	L	M	N	O	P	Q	R	S	T	U	V	W		X		Y	Z
	SAE J617	SAE J620	SAE J617	SAE J620																				Ø	N°	Ø	N°		
18	1	14"	1	14"	310	127	71.5	111.5	97.5	120	658	M16	1197	913	456.5	315	343	343	485.2	25.4	53.5	79	100	M10	12	M12	8	18	14
22	1	14"	0	18"	374		119	128	134	130	772	M18	1326	1004	502	415	388.7	388.7	549.7	15.7	48.2	81	150	M12	16	M16	6	85	15
	0	18"			363	108	18	18	20																				

TECHNICAL DATA

Size	Weight w/o oil kg*	Oil Quantity l	Max speed rpm	Max Input torque ft/lbs	Total Heads hp**	Single Head hp**	Ratio (n1:n2)
18	350	18	2200	2470	402	160	1:1 - 1:1.35
22	530	35	2100	4646	536	234	1:1.55 - 1:187

Dimensions are subject to alteration without notice

* deduct 20 kg for each head

** @ max. speed

*** not SAE standard

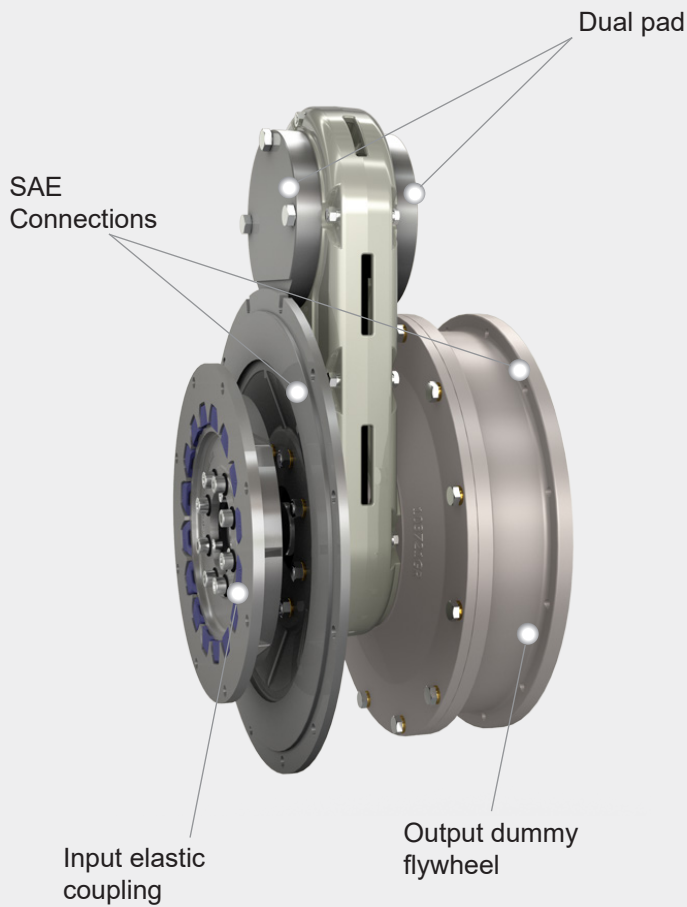
STELLADRIVE

SPD - DUAL PUMP DRIVE

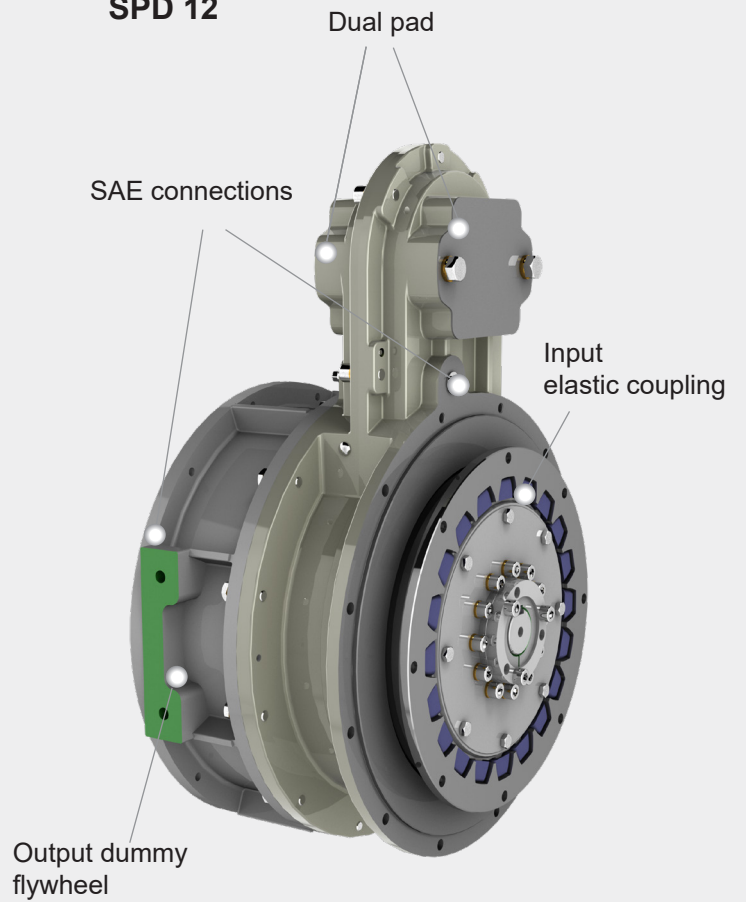
The SPD is an innovative modular split power drive designed to be mounted on industrial engines with SAE flywheels and housings. The input is a rugged Rubber Block Drive flywheel coupling. This elastic coupling absorbs radial and angular misalignments while dampening torsional vibrations.

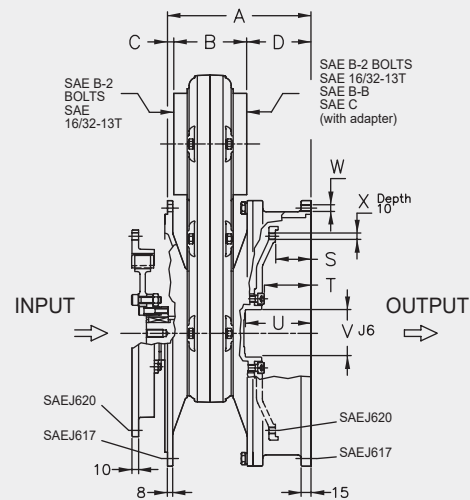
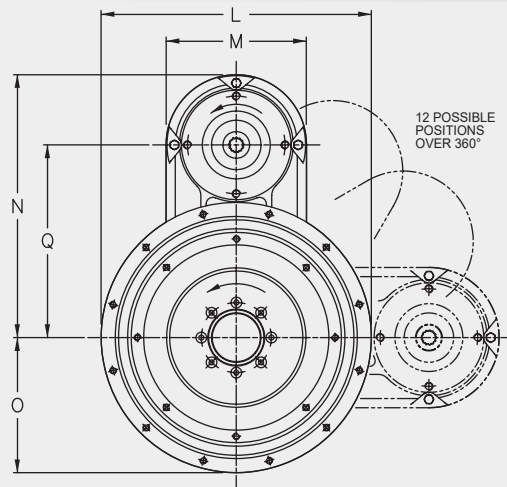
The SPD output is a dual pad SAE A or B pump tower as well as SAE flywheel and flywheel housing. To allow for easy installation, the pump tower can be mounted in 12 possible positions over 360 degrees. The output flywheel can accept transmissions, pumps, compressors and PTO's.

SPD 11



SPD 12

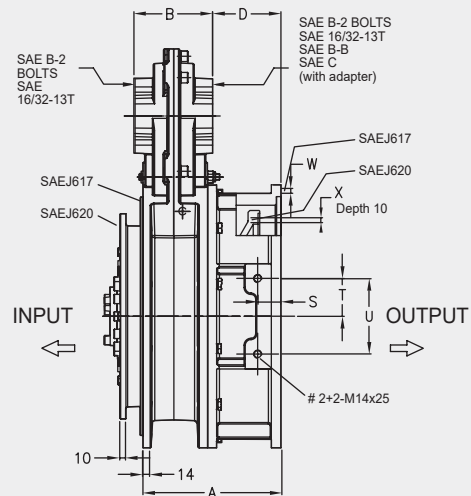
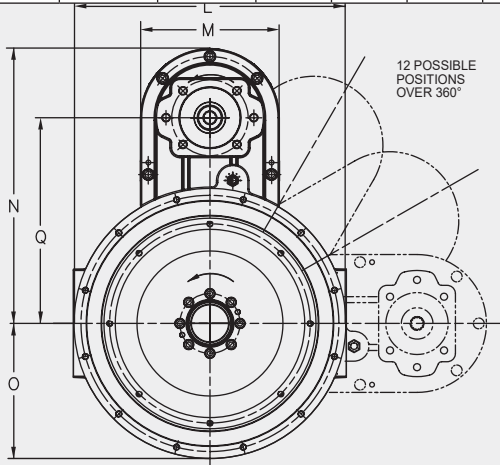




SPD 11

DIMENSIONS																		
Size	INPUT		OUTPUT		A	B	C	D	L			M	N	O			Q	S
	SAE J617	SAE J620	SAE J617	SAE J620					SAE 3	SAE 4	SAE 5			SAE 3	SAE 4	SAE 5		
11	3	11½"	4	10	218.5	111	9.5	98	451	404	356	210	393	225.5	202	178	288	53.8
	4	10"																
	5	7½"																

DIMENSIONS								TECHNICAL DATA							
Size	T	U	V	W		Y		Weight kg	Max speed rpm	Max input torque ft/lbs			Head hp*	Ratios (n1:n2)	
				Ø	N°	Ø	N°			SAE 3	SAE 4	SAE 5			
11	71	100	72	M10	12	M10	8	50	3000	413	413	228	71	1:1	



SPD 12

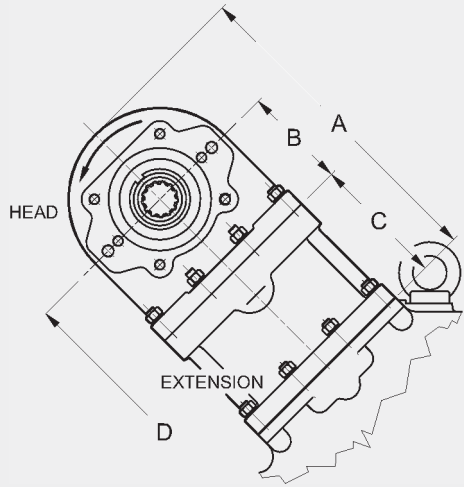
DIMENSIONS																	
Size	INPUT		OUTPUT		A	B	D	L	M	N	O	Q	S	T	U	W	
	SAE J617	SAE J620	SAE J617	SAE J620												Ø	N°
12	3	11½"	3	11½"	237	134	117	454	231	460	226	344	40	65	130	M10	12
	4	10"	4	10"													

Dimensions are subject to alteration without notice
* @ 3000 rpm

TECHNICAL DATA								
Size	X		Weight kg	Max speed rpm	Max input torque ft/lbs		Head hp*	Ratios (n1:n2)
	Ø	N°			SAE 3	SAE 4		
12	M10	8	73	3000	634	413	160	1:1.077

STELLADRIVE

Head extension for MPD18 and 22 only



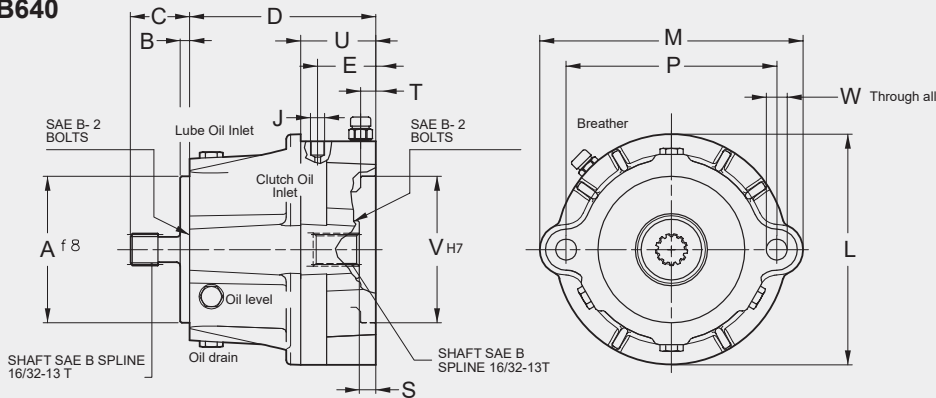
DIMENSIONS				
	A	B	C	D*
MPD18	405	128	164	649
MPD22	431	128	190	740

*from main shaft axis

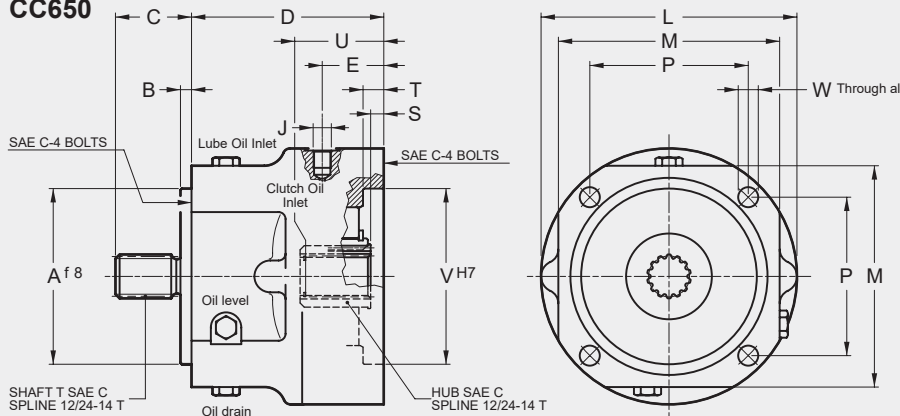
When there is interference between the pumps mounted on the MPD and the driven device, the head extension kit is the perfect solution. This kit mounts on any head and provides an extra 164 mm of clearance for MPD18 and 190 mm for MPD22. Additionally, the extension kit reverses the rotation of MPD head making it useful where engine rotation is required.

Air/oil actuated clutches for pump disconnection

BB640



CC650



BB640	Working pressure bar	5	7	9
	Max torque ft/lbs	103	143	184
CC650	Working pressure bar	5	7	9
	Max torque ft/lbs	206	287	368

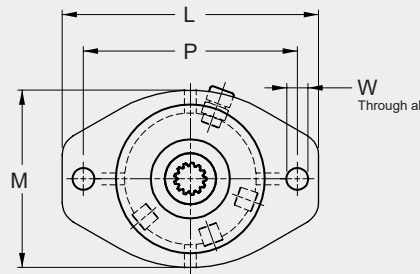
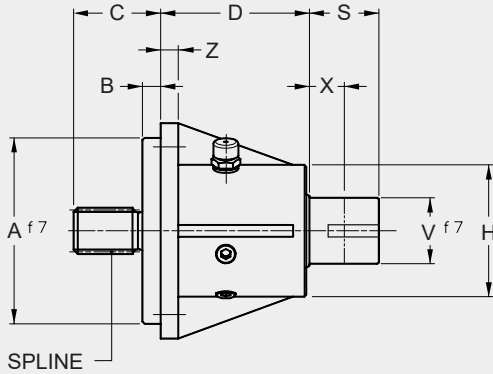
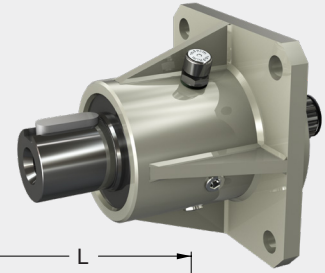
Size	DIMENSIONS													TECHNICAL DATA					
	A	B	C	D	E	J	L	M	P	S	T	U	V	W		Max torque ft/lbs	Max pressure bar	Weight w/o oil kg	Oil Quantity l
	Dia.		N°																
BB640	101.6	6.5	41	129	41.5	1/8" BSP	168	190	146	11.5	10.5	52	101.6	14.5	2	250	12	15	1.6
CC650	127	8	55	139	44.5	1/4" BSP	185	160	114.5	9.5	15	56.5	127	14.5	4	612	15	16.5	1.8

Dimensions are subject to alteration without notice

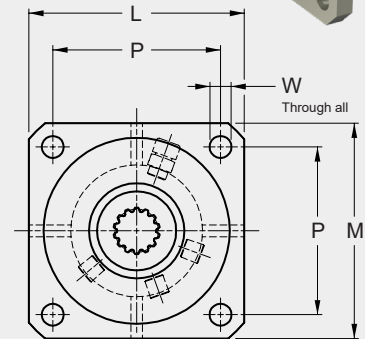
STELLADRIVE

Head PTO for in-line and pulley mounting

TECHNICAL DATA					
PTO	Max speed rpm	Max torque ft/lbs	Max side Load N with X=24	Weight w/o oil kg	Oil Quantity l
SAE B	3000	103	3000	6	0.05
SAE C	3000	368	7200	7	0.05



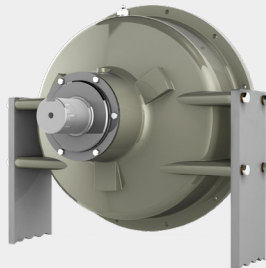
SAE B - 2 HOLES



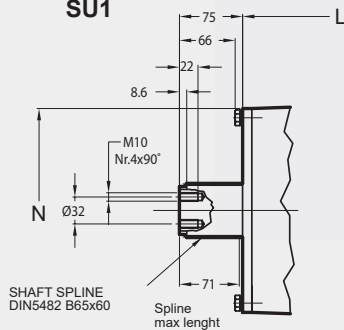
SAE C - 4 HOLES

DIMENSIONS														
PTO	SPLINE SAE J744	A	B	C	D	H	L	M	P	S	V	W		Z
												Dia.	N°	
SAE B	13T 16/32	101.6	9	41	101.5	90	175	121	146	47.5	45	15	2	12
SAE C	14T 12/24	127	12.5	55	101.5	90	147	147	114.5	47.5	45	15	4	12

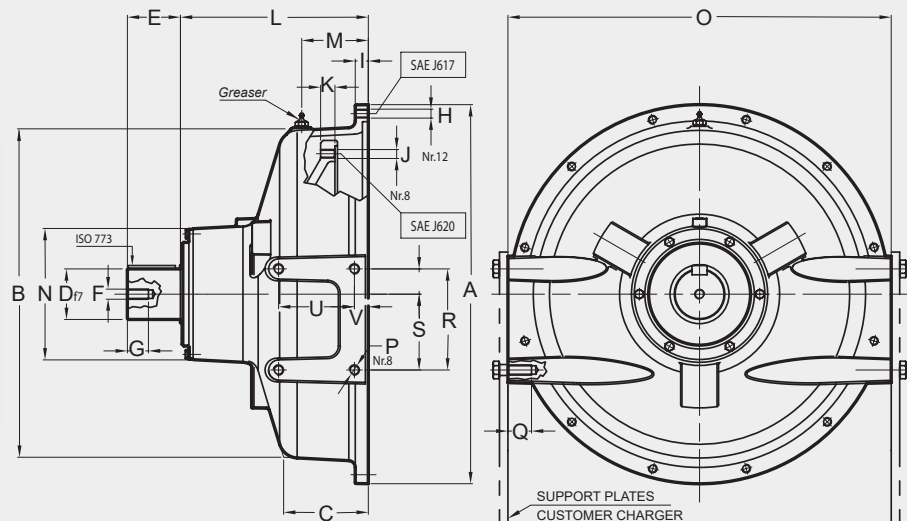
SU free standing flywheel (without pilot bearing)



SU1



SU4 - SU3

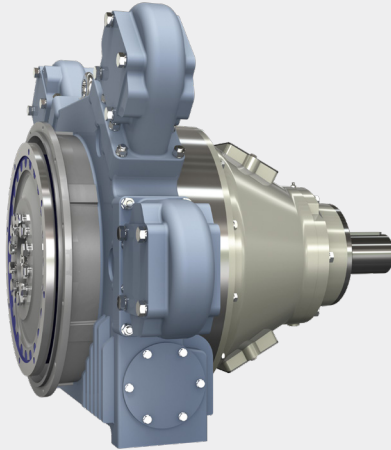


DIMENSIONS																									
Size	SAE J617	SAE J620	A	B	C	D	E	F	G	H	I	J	K	L	M	N	O	P	Q	R	S	T	U	V	kg
SU4	4	10"	403	350	105	42	48	M12	25	M10	15	M10	-	201.5	-	138	405	M10	28	105	80	25	85	15	35
SU3	3	11½"	450	390	100	60	63	M12	25	M10	15.5	M10	78	223	78	156	455	M12	28	120	90	30	90	16.5	52
SU1	1	14"	552	500	143	See drawing				M10	23	M10	96	251	120	242	555	M16	35	240	120	120	130	25	115

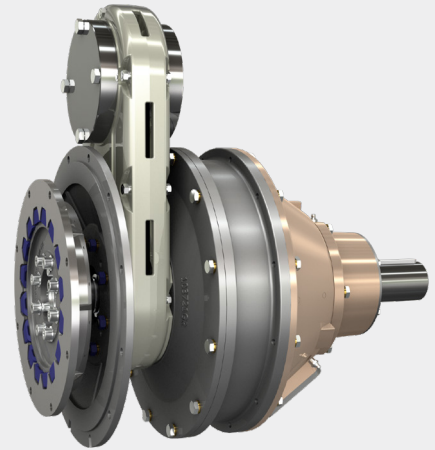
Dimensions are subject to alteration without notice

INSTALLATION EXAMPLES

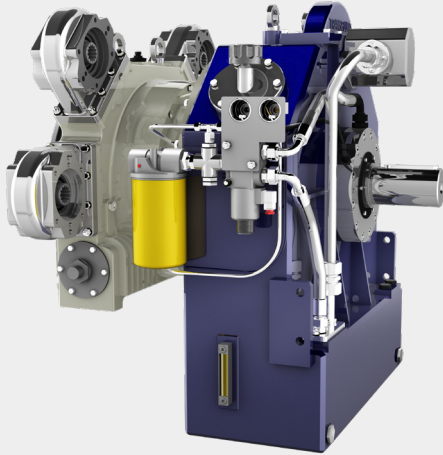
MPD with HFO OIL ACTUATED PTO



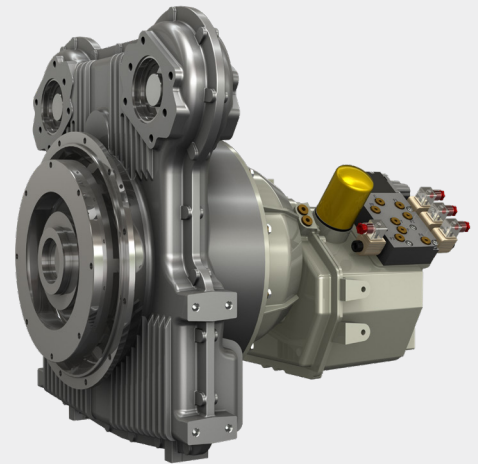
SPD with HFR OIL/AIR ACTUATED PTO



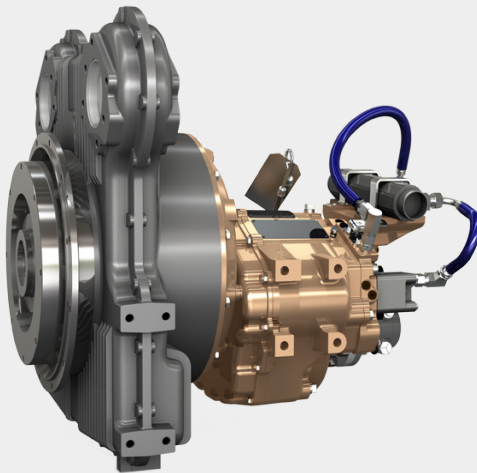
MPD with KPTO VARIABLE FILL FLUID COUPLING



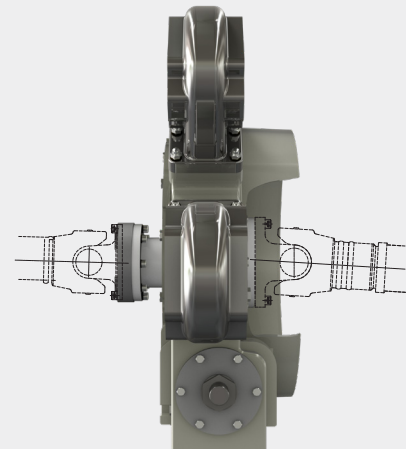
MPD with RANGERMATIC POWER SHIFT TRANSMISSION



MPD with MARINE GEAR



MPD with INPUT and OUTPUT CARDAN SHAFT (FOOT MOUNTING)



U.S.A
 TRANSFLUID LLC
 Auburn, GA 30011
 Ph.: +1.770.822.1777
 salesna@transfluid.us

FRANCE
 TRANSFLUID FRANCE s.a.r.l.
 38110 Rochetoirin
 Ph.: +33.9.75635310
 tffrance@transfluid.eu

THE NETHERLANDS
 TRANSFLUID NORTH EUROPE B.V.
 NL-3992 AK, Houten
 Ph. +31 (0)85 4868530
 info@bellmarine.nl

CHINA
 TRANSFLUID BEIJING
 TRADE CO. LTD Beijing
 Ph.: +86.10.60442301-2
 tbtinfo@transfluid.cn

Global web site: www.transfluid.eu • **E-commerce web site:** www.buy-transfluid.com