



TRANSFLUID[®]
industrial & marine

BATTERY PACK

Innovative Energy System
for Marine Applications



2024



drive with us

Transfluid's battery

Transfluid's battery is the next-generation accumulator for marine and industrial applications.

It is based on lithium iron phosphate cells (LiFePO4), a technology that is safe and has the best performance/cost ratio, with integrated BMS to maintain the cells always equalized and efficient.

Transfluid's battery gives great usage flexibility and **reduces the total ownership costs**, thanks to its 4000 cycles lifespan, being maintenance-free and allowing fast charging to increase the daily available energy.

The absence of emissions and the extended operating temperature range make Transfluid's battery perfectly suited for every workplace.

It is available in various sizes and capacities, and **equipped with special features** for integration with the Transfluid transmission system.

CERTIFICATES:

Our battery system successfully passed all the DNV and BV tests including the new 2018 forced thermal runaway and this makes it compliant with Norwegian Maritime Authority (NMA) Propagation Test 1



Sjøfartsdirektoratet
Norwegian Maritime Authority



**BUREAU
VERITAS**

Interfacing

Transfluid's battery can work as a standalone accumulator, or it can interface through CAN-bus or Ethernet to other electronic devices such as the MPCB, display, PLC, in order to show the data of the battery on a dashboard, or to implement an advanced management of the available energy.

Suited for every application

Having no gas emissions, these batteries are suited also for marine and many industrial applications.

Battery LiFePO4

It's based on lithium iron phosphate cells (LiFePO4), a technology that is safe and has the best performance/cost ratio, with integrated BMS to maintain the cells are always equalized and efficient. Box is stainless steel IP65.

Long lifespan

- More than 4000 cycles

The lifespan is 3 times longer than traditional batteries, making the cost per cycle lower than any other technology. Thanks to their high efficiency, up to +25% than lead acid batteries, energy costs and CO2 emissions are reduced.

Rapid charge, whenever you want

- +50% charge level in only 30 minutes
- Complete charge in 2 hours
- Accepts partial charge and discharge
- No memory effect

Charger and discharger

- Continuous charging (A) 0.8 C
- Pulse charging (A) SOC < 80% 1.2 C
- Continuous Discharging (A) 1 C
- Pulse Discharging (A) 2 C

Maintenance-free / Remote control system

Every Transfluid battery has an integrated remote monitor system that permits to download a daily log of all the internal parameters. This control reports the precise health status of every battery pack of the fleet. Transfluid batteries are maintenance-free allowing service on-site through the integrated diagnosis system.

Wide Temperature Range

Transfluid batteries are certified for working in an operating temperature range between -4°F to 140°F that means that the batteries can be installed in ambient temperature from -22°F to 113°F, for the most severe conditions automatic heater keeps the battery in max efficiency condition.

No emissions

No gas emissions during charge and discharge, so no special charging rooms are required. They may be charged at any place with maximum safety.

Capacity Ah	Continuous discharge A	Pulse discharger A	Max charging current A	Pulse charge A	Operating Temperature °F	Box Material	Protection class
105	105	210	70	120	14 / 113	SS316L	IP65 (No cooling required)
210	210	420	160	240			
315	315	630	210	360			
420	420	840	320	480			
630	630	1260	480	720			
840	840	1680	640	960			

51V

Energy kWh	Architecture	Dimension Single Box **	Number Of Modules	Total Weight
10.7	Single Module	605x630 h281 mm	1	112 kg
21.5	2P		2 + MCR*	224 kg
32.3	3P		3 + MCR*	336 kg
43.0	4P		4 + MCR*	448 kg

140V

Energy kWh	Architecture	Dimension Single Box **	Number Of Modules	Total Weight
29.5	3S	605x630 h281 mm	3	336 kg
59.1	3S - 2P		6 + MCR*	672 kg
88.7	3S - 3P		9 + MCR*	1008 kg
118.2	3S - 4P		12 + MCR*	1344 kg

48V Easy (without Type Approval)

Energy kWh	Architecture	Dimension Single Box **	Number Of Modules	Total Weight
10.7	Single Module	420x750 h275 mm	1	101 kg



307V

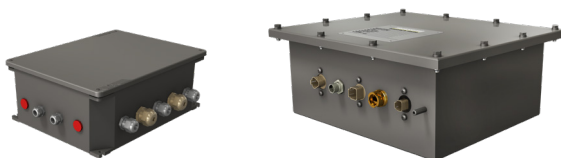
Energy kWh	Architecture	Dimension Single Box**	Number Of Modules	Total Weight
32.2	3S	605x630 h281 mm	3	336 kg
64.5	3S	955x630 h281 mm	3	561 kg
96.7	3S - 3P	605x630 h281 mm	9 + MCR*	1008kg
129.0	3S - 2P	955x630 h281 mm	6 + MCR*	1122 kg
193.5	3S - 3P		9 + MCR*	1683 kg
258.0	3S - 4P		12 + MCR*	2244kg

102V

Energy kWh	Architecture	Dimension Single Box **	Number Of Modules	Total Weight
10.7	Single Element	605x630 h281 mm	1	112 kg
21.5	Single Element	955x630 h281 mm	1	187 kg
32.2	3P	605x630 h281 mm	3 + MCR*	336 kg
43.0	2P	955x630 h281 mm	2 + MCR*	374 kg
64.5	3P		3 + MCR*	561 kg
86.0	4P		4 + MCR*	748 kg

409V

Energy kWh	Architecture	Dimension Single Box**	Number Of Modules	Total Weight
43	4S	605x630 h281 mm	4	448 kg
86	4S	955x630 h281 mm	4	748 kg
129	4S - 3P	605x630 h281 mm	12 + MCR*	1344 kg
172	4S - 2P	955x630 h281 mm	8 + MCR*	1496 kg
258	4S - 3P		12 + MCR*	2244 kg
344	4S - 4P		16 + MCR*	2992 kg



* MCR dimensions: 400x350xh167 mm, weight: 11 kg

* Collector box included **

** Indicative dimensions. ask for official drawing

TRANSFLUID[®]

industrial & marine

U.S.A.

TRANSFLUID LLC
Auburn, GA 30011
Ph. +1.770.822.1777
salesna@transfluid.us

ITALY HEADQUARTERS

TRANSFLUID S.p.A.
Via Guido Rossa, 4
21013 Gallarate (VA)
Ph. +39.0331.28421
Fax +39.0331.2842911

THE NETHERLANDS

TRANSFLUID NORTH EUROPE B.V.

Bellmarine

NL- 3992 AK, Houten
Ph. +31 (0)85 4868530
info@bellmarine.nl



(Examples of different applications of Transfluid's batteries technology)

LOCAL DISTRIBUTOR



www.transfluid.us

drive with us



TRANSFLUID[®]
industrial & marine

BATTERY PACK

Innovative Energy System
for Marine Applications



2024



drive with us